

To our customers,

---

## Old Company Name in Catalogs and Other Documents

---

On April 1<sup>st</sup>, 2010, NEC Electronics Corporation merged with Renesas Technology Corporation, and Renesas Electronics Corporation took over all the business of both companies. Therefore, although the old company name remains in this document, it is a valid Renesas Electronics document. We appreciate your understanding.

Renesas Electronics website: <http://www.renesas.com>

April 1<sup>st</sup>, 2010  
Renesas Electronics Corporation

Issued by: Renesas Electronics Corporation (<http://www.renesas.com>)

Send any inquiries to <http://www.renesas.com/inquiry>.

## Notice

1. All information included in this document is current as of the date this document is issued. Such information, however, is subject to change without any prior notice. Before purchasing or using any Renesas Electronics products listed herein, please confirm the latest product information with a Renesas Electronics sales office. Also, please pay regular and careful attention to additional and different information to be disclosed by Renesas Electronics such as that disclosed through our website.
2. Renesas Electronics does not assume any liability for infringement of patents, copyrights, or other intellectual property rights of third parties by or arising from the use of Renesas Electronics products or technical information described in this document. No license, express, implied or otherwise, is granted hereby under any patents, copyrights or other intellectual property rights of Renesas Electronics or others.
3. You should not alter, modify, copy, or otherwise misappropriate any Renesas Electronics product, whether in whole or in part.
4. Descriptions of circuits, software and other related information in this document are provided only to illustrate the operation of semiconductor products and application examples. You are fully responsible for the incorporation of these circuits, software, and information in the design of your equipment. Renesas Electronics assumes no responsibility for any losses incurred by you or third parties arising from the use of these circuits, software, or information.
5. When exporting the products or technology described in this document, you should comply with the applicable export control laws and regulations and follow the procedures required by such laws and regulations. You should not use Renesas Electronics products or the technology described in this document for any purpose relating to military applications or use by the military, including but not limited to the development of weapons of mass destruction. Renesas Electronics products and technology may not be used for or incorporated into any products or systems whose manufacture, use, or sale is prohibited under any applicable domestic or foreign laws or regulations.
6. Renesas Electronics has used reasonable care in preparing the information included in this document, but Renesas Electronics does not warrant that such information is error free. Renesas Electronics assumes no liability whatsoever for any damages incurred by you resulting from errors in or omissions from the information included herein.
7. Renesas Electronics products are classified according to the following three quality grades: “Standard”, “High Quality”, and “Specific”. The recommended applications for each Renesas Electronics product depends on the product’s quality grade, as indicated below. You must check the quality grade of each Renesas Electronics product before using it in a particular application. You may not use any Renesas Electronics product for any application categorized as “Specific” without the prior written consent of Renesas Electronics. Further, you may not use any Renesas Electronics product for any application for which it is not intended without the prior written consent of Renesas Electronics. Renesas Electronics shall not be in any way liable for any damages or losses incurred by you or third parties arising from the use of any Renesas Electronics product for an application categorized as “Specific” or for which the product is not intended where you have failed to obtain the prior written consent of Renesas Electronics. The quality grade of each Renesas Electronics product is “Standard” unless otherwise expressly specified in a Renesas Electronics data sheets or data books, etc.
  - “Standard”: Computers; office equipment; communications equipment; test and measurement equipment; audio and visual equipment; home electronic appliances; machine tools; personal electronic equipment; and industrial robots.
  - “High Quality”: Transportation equipment (automobiles, trains, ships, etc.); traffic control systems; anti-disaster systems; anti-crime systems; safety equipment; and medical equipment not specifically designed for life support.
  - “Specific”: Aircraft; aerospace equipment; submersible repeaters; nuclear reactor control systems; medical equipment or systems for life support (e.g. artificial life support devices or systems), surgical implantations, or healthcare intervention (e.g. excision, etc.), and any other applications or purposes that pose a direct threat to human life.
8. You should use the Renesas Electronics products described in this document within the range specified by Renesas Electronics, especially with respect to the maximum rating, operating supply voltage range, movement power voltage range, heat radiation characteristics, installation and other product characteristics. Renesas Electronics shall have no liability for malfunctions or damages arising out of the use of Renesas Electronics products beyond such specified ranges.
9. Although Renesas Electronics endeavors to improve the quality and reliability of its products, semiconductor products have specific characteristics such as the occurrence of failure at a certain rate and malfunctions under certain use conditions. Further, Renesas Electronics products are not subject to radiation resistance design. Please be sure to implement safety measures to guard them against the possibility of physical injury, and injury or damage caused by fire in the event of the failure of a Renesas Electronics product, such as safety design for hardware and software including but not limited to redundancy, fire control and malfunction prevention, appropriate treatment for aging degradation or any other appropriate measures. Because the evaluation of microcomputer software alone is very difficult, please evaluate the safety of the final products or system manufactured by you.
10. Please contact a Renesas Electronics sales office for details as to environmental matters such as the environmental compatibility of each Renesas Electronics product. Please use Renesas Electronics products in compliance with all applicable laws and regulations that regulate the inclusion or use of controlled substances, including without limitation, the EU RoHS Directive. Renesas Electronics assumes no liability for damages or losses occurring as a result of your noncompliance with applicable laws and regulations.
11. This document may not be reproduced or duplicated, in any form, in whole or in part, without prior written consent of Renesas Electronics.
12. Please contact a Renesas Electronics sales office if you have any questions regarding the information contained in this document or Renesas Electronics products, or if you have any other inquiries.

(Note 1) “Renesas Electronics” as used in this document means Renesas Electronics Corporation and also includes its majority-owned subsidiaries.

(Note 2) “Renesas Electronics product(s)” means any product developed or manufactured by or for Renesas Electronics.

---

# H8/300H Super Low Power Series

## Averaging the Results of Measurement by $\Delta\Sigma$ A/D Converter

---

### Introduction

The  $\Delta\Sigma$ A/D converter is used to measure the voltage input to the Ain1 pin. The external input voltage provides the reference voltage for the  $\Delta\Sigma$ A/D converter. The data created after 64 rounds of conversion are averaged and the results are saved in the internal RAM as 14-bit data.

### Target Device

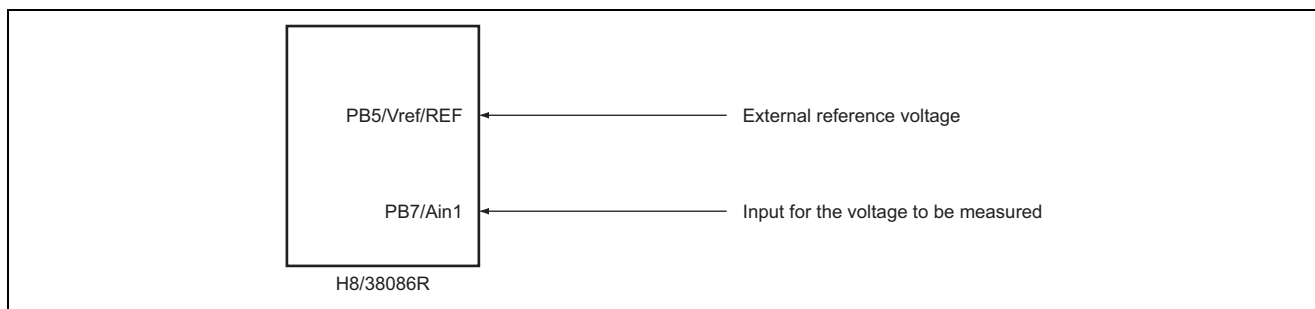
H8/38086R

### Contents

1. Specifications.....	2
2. Measurement conditions.....	3
3. Description of functions used.....	4
4. Principle of averaging the results of measurement by the $\Delta\Sigma$ A/D converter.....	6
5. Description of software.....	7
6. Flowcharts.....	15

### 1. Specifications

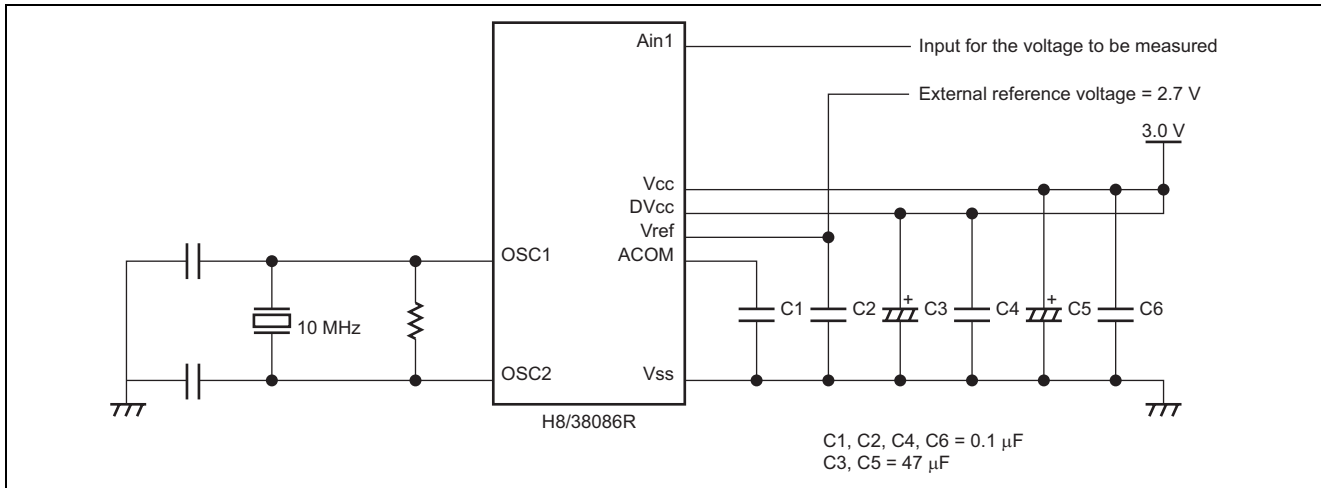
- As is shown in figure 1, the  $\Delta\Sigma$ A/D converter of the H8/38086R is used to measure the voltage input to the Ain1 pin.
- The external input voltage provides the reference voltage for the  $\Delta\Sigma$ A/D converter.
- The voltage to be measured is applied to the Ain1 pin. It is then A/D converted, and the data thus created are averaged and saved to the internal RAM. 65 rounds of A/D conversion are executed. The data created in the first round of conversion are discarded, and those from the second and later rounds are used. Also, the A/D-converted data read from the A/D Data Register (ADDR) are shifted 2 bits right and handled as 14-bit data. The 14-bit data created in the 64 rounds of A/D conversion are added together, and the result of addition is shifted 6 bits right and saved in the internal RAM.
- The mode of operation is the wait mode. The oversampling frequency is  $\phi$ . The A/D conversion is executed with the programmable-gain amplifier (PGA) bypassed.
- The operating mode is switched to sleep (high-speed) mode during A/D conversion since this minimizes the noise generated by the CPU. The A/D conversion end interrupt takes the chip out of sleep (high-speed) mode and places it in the active (high-speed) mode. The data generated by A/D conversion are then stored in the internal RAM. The module standby function is used to place internal peripheral functions other than the  $\Delta\Sigma$ A/D converter, such as SCI3, timer F, IIC2, the A/D converter, RTC, TPU, PWM, watchdog timer, and LCD internal peripheral module, on module standby.



**Figure 1 Setup of the  $\Delta\Sigma$ A/D Converter for Measurement Results to be Averaged**

## 2. Measurement conditions

Figure 2 shows the measuring circuit in this sample task.



**Figure 2  $\Delta\Sigma$ A/D Converter Measuring Circuit (When Using an External Reference Voltage)**

Conditions for voltage measurement with the  $\Delta\Sigma$ A/D converter using an external reference voltage are as follows.

- $V_{cc} = 3.0$  V
- $DV_{cc} = 3.0$  V
- $V_{ref} =$  Externally input 2.7 V
- System clock frequency ( $\phi$ ) = 10 MHz
- Oversampling frequency ( $f_{ovs}$ ) =  $\phi$
- PGA = bypass
- Conversion mode = wait mode
- Range of input voltage = 0.2 to 2.7 V ( $V_{ref}$ )

3. Description of functions used

Figure 3 is a block diagram of the  $\Delta\Sigma$ /D converter.

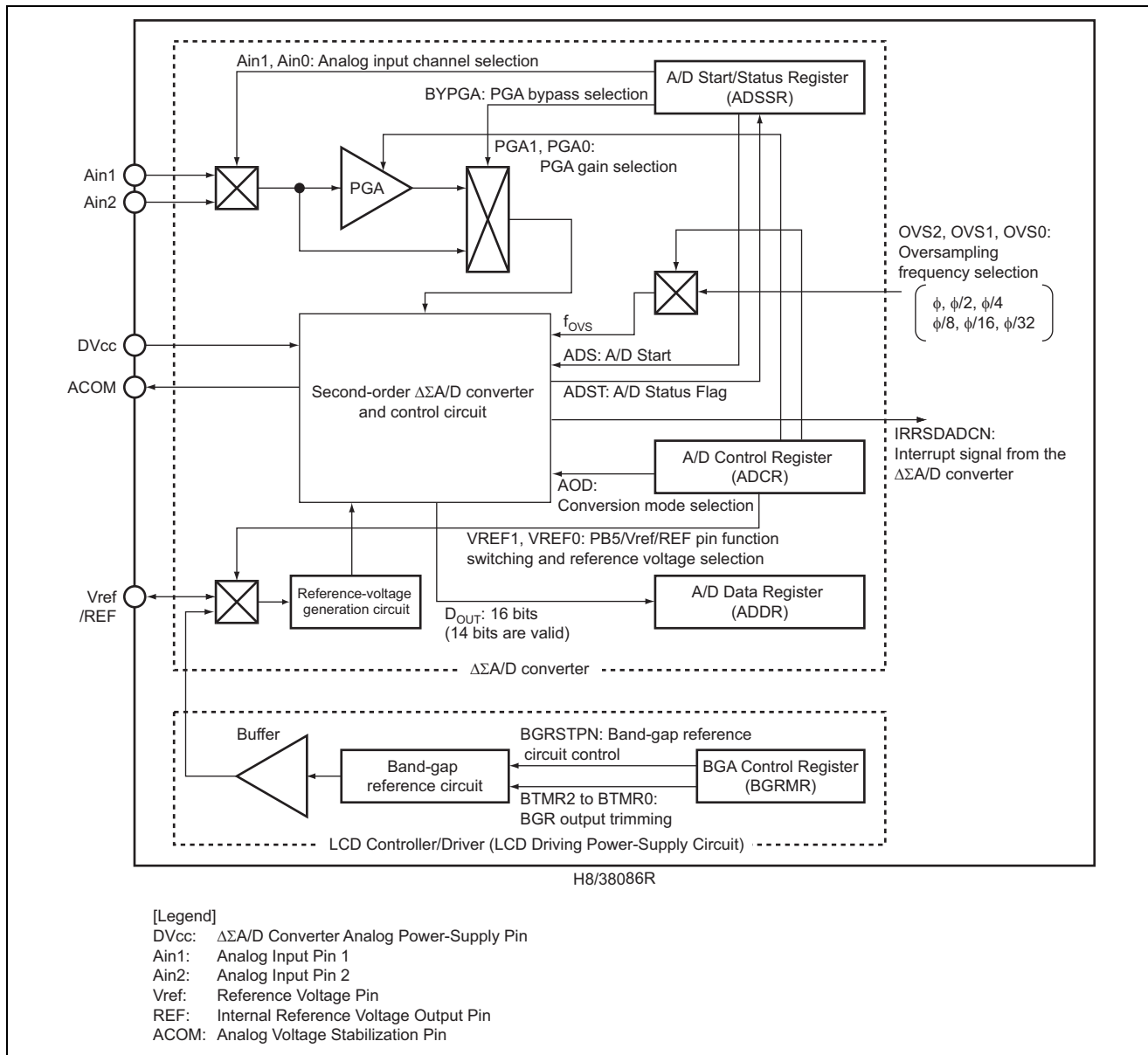


Figure 3 Block Diagram of the  $\Delta\Sigma$ /D Converter

Functions of the  $\Delta\Sigma A/D$  converter are described below.

### 3.1 Assignment of pin functions

Table 1 shows the assignment of pin functions used for the  $\Delta\Sigma A/D$  converter.

**Table 1 Assignment of Pin Functions**

Pin	Function
Vref/REF	As the Vref input pin, input for the external reference voltage (2.7 V dc)
DVcc	As the power-supply pin for the $\Delta\Sigma A/D$ converter, input for 3.0 V dc
Ain1	As the analog input pin, input for the voltage to be measured
Ain2	Not used
ACOM	As the analog voltage stabilization pin, for connection to a 0.1- $\mu$ F capacitor

4. Principle of averaging the results of measurement by the  $\Delta\Sigma A/D$  converter

Figure 4 illustrates averaging of the results of measurement by the  $\Delta\Sigma A/D$  converter

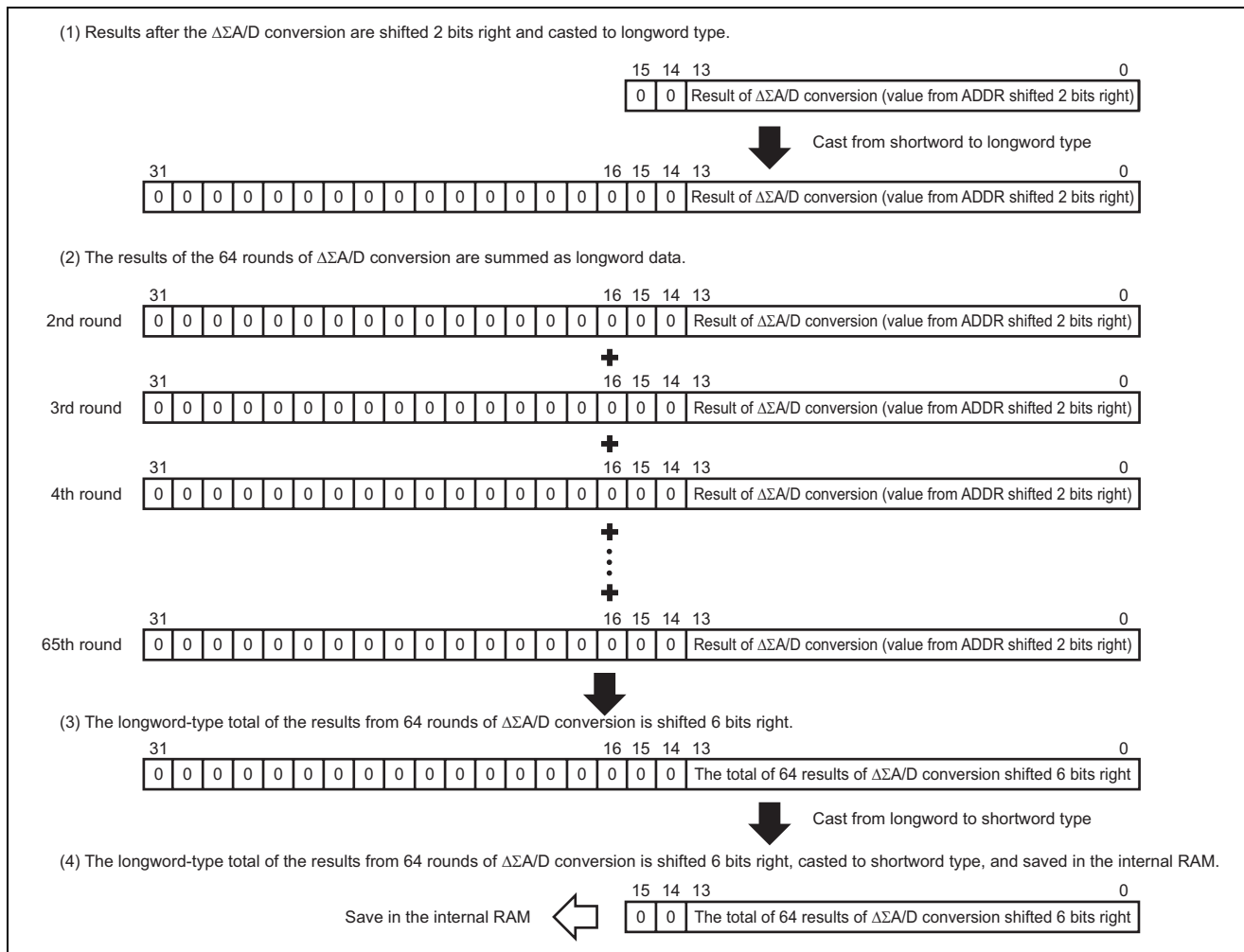


Figure 4 Averaging of the Results of Measurement by the  $\Delta\Sigma A/D$  Converter

## 5. Description of software

### 5.1 Description of internal I/O register usage

Internal I/O registers used in this sample task are described below.

- A/D Data Register (ADDR) Address: H'F062

Bit	Bit Name	Initial value	R/W	Description
15	ADD13	—	R	16-bit read-only register that holds the results of A/D conversion. The 14 bits of A/D-converted data are stored in the higher-order 14 bits. The ADDR value during A/D conversion is undefined.
14	ADD12	—	R	
13	ADD11	—	R	
12	ADD10	—	R	
11	ADD9	—	R	
10	ADD8	—	R	
9	ADD7	—	R	
8	ADD6	—	R	
7	ADD5	—	R	
6	ADD4	—	R	
5	ADD3	—	R	
4	ADD2	—	R	
3	ADD1	—	R	
2	ADD0	—	R	
1	—	—	—	—
0	—	—	—	—

- A/D Control Register (ADCR) Address: H'F060

Bit	Bit Name	Initial value	R/W	Description
7	MOD	0	R/W	<b>Conversion Mode Select</b> Sets the conversion mode. While the MOD bit is set to 1, A/D conversion is executed regardless of the value of the ADS bit in ADSSR. 0: Wait mode 1: Continuous mode
6	OVS2	0	R/W	<b>Oversampling Frequency Select</b> Select the oversampling frequency. 000: $\phi$ 001: $\phi/2$ 010: $\phi/4$ 011: $\phi/8$ 100: $\phi/16$ 101: $\phi/32$ 11x: Setting prohibited
5	OSV1	0	R/W	
4	OVS0	0	R/W	
3	VREF1	0	R/W	<b>PB5/Vref/REF Pin Function Switch and Reference Voltage Select</b> Specify whether the PB5/Vref/REF pin functions as a PB5 pin, Vref pin, or REF pin. In addition, these bits select the external reference voltage (Vref) or internal reference voltage (REF) as the reference voltage for the $\Delta\Sigma$ A/D converter. If REF is to be selected, set these bits after setting the BGRSTPN bit in BGRMR to 1 so that the BGR operates. 00: Functions as a PB5 input pin 01: Functions as a Vref input pin, and the external reference voltage (Vref) is input to the reference generator 10: Functions as a REF output pin 11: Functions as a REF output pin, and the internal reference voltage (REF) is input to the reference generator When these bits are set to B'11, the REF voltage is input to the reference voltage generator in the $\Delta\Sigma$ A/D converter at the same timing as the internal reference voltage (REF) is output from the REF pin. To operate the $\Delta\Sigma$ A/D converter with the internal reference voltage (REF), set these bits to B'11.
2	VREF0	1	R/W	
1	PGA1	0	R/W	<b>PGA Gain Select</b> Set the analog input voltage multiplication ratio to a value from 1/3 to 4. 00: 1 01: 2 10: 4 11: 1/3
0	PGA0	0	R/W	

Note: x: Don't care

- A/D Start/Status Register (ADSSR) Address: H'F061

Bit	Bit Name	Initial value	R/W	Description
7	ADS	1	R/W	A/D Start When this bit is set to 1 in wait mode (the MOD bit in ADCR is cleared to 0), A/D conversion is started.
6	ADST	—	R	A/D Status Flag When this bit is read in wait mode (the MOD bit in ADCR is cleared to 0), A/D conversion status can be identified. 0: In the idle state 1: A/D conversion in progress
5	AIN1	0	R/W	Analog Input Channel Select Select the analog input channel. 00: Not selected 01: Ain1 10: Ain2 11: Not selected
4	AIN0	1	R/W	
3	BYPGA	1	R/W	PGA Bypass Select Selects whether the analog input is to the PGA or second-order $\Delta\Sigma$ A/D converter. 0: To the PGA 1: To the second-order $\Delta\Sigma$ A/D converter
2	—	—	—	Reserved
1	—	—	—	These bits cannot be modified.
0	—	—	—	

- Interrupt Enable Register 2 (IENR2) Address: H'FFF4

Bit	Bit Name	Initial value	R/W	Description
5	IENSAD	1	R/W	$\Delta\Sigma$ A/D Converter Interrupt Request Enable The $\Delta\Sigma$ A/D converter interrupt request is enabled when this bit is set to 1. 0: $\Delta\Sigma$ A/D converter interrupt request is disabled. 1: $\Delta\Sigma$ A/D converter interrupt request is enabled.

- Interrupt Request Register 2 (IRR2) Address: H'FFF7

Bit	Bit Name	Initial value	R/W	Description
5	IRRSAD	0	R/(W)*	$\Delta\Sigma$ A/D Converter Interrupt Request Flag [Setting condition] Completion of $\Delta\Sigma$ A/D conversion [Clearing condition] Writing of 0 to this bit

Note: \* The only effective write value is 0, which clears the flag.

- System Control Register 1 (SYSCR1) Address: H'FFF0

Bit	Bit Name	Initial value	R/W	Description
7	SSBY	0	R/W	<b>Software Standby</b> Selects the mode to be entered after execution of the SLEEP instruction. 0: The transition is to sleep mode or subsleep mode. 1: The transition is to standby mode or watch mode.
3	LSON	0	R/W	<b>Low-Speed On Flag</b> Selects the system clock ( $\phi$ ) or subclock ( $\phi_{SUB}$ ) as the CPU operating clock on exit from watch mode. 0: The CPU operates from the system clock ( $\phi$ ) 1: The CPU operates from the subclock ( $\phi_{SUB}$ )

- System Control Register 2 (SYSCR2) Address: H'FFF1

Bit	Bit Name	Initial value	R/W	Description
3	DTON	0	R/W	<b>Direct Transfer on Flag</b> Along with bits SSBY, TMA3, and LSON in SYSCR1 and bit MSON in SYSCR2, selects the mode to be entered after execution of the SLEEP instruction.
2	MSON	0	R/W	<b>Medium Speed on Flag</b> After standby, watch, or sleep mode is cleared, this bit selects active (high-speed) or active (medium-speed) mode.

- Clock Halt Register 1 (CKSTPR1) Address: H'FFFA

Bit	Bit Name	Initial value	R/W	Description
7	S4CKSTP	1	R/W* <sup>1</sup>	SCI4 Module Standby SCI4 enters standby mode when this bit is cleared to 0. 0: SCI4 is placed in module standby mode 1: SCI4 is taken out of module standby mode.
6	S31CKSTP	0	R/W	SCI3_1 Module Standby* <sup>2</sup> SCI3_1 enters standby mode when this bit is cleared to 0. 0: SCI3_1 is placed in module standby mode. 1: SCI3_1 is taken out of module standby mode.
5	S32CKSTP	0	R/W	SCI3_2 Module Standby* <sup>2</sup> SCI3_2 enters standby mode when this bit is cleared to 0. 0: SCI3_2 is placed in module standby mode 1: SCI3_2 is taken out of module standby mode.
4	ADCKSTP	0	R/W	A/D Converter Module Standby The A/D converter enters standby mode when this bit is cleared to 0. 0: The A/D converter is placed in module standby mode. 1: The A/D converter is taken out of module standby mode.
3	DADCKSTP	1	R/W	$\Delta\Sigma$ A/D Converter Module Standby The $\Delta\Sigma$ A/D converter enters standby mode when this bit is cleared to 0. 0: The $\Delta\Sigma$ A/D converter is placed in module standby mode. 1: The $\Delta\Sigma$ A/D converter is taken out of module standby mode.
2	TFCKSTP	0	R/W	Timer F Module Standby Timer F enters standby mode when this bit is cleared to 0. 0: Timer F is placed in module standby mode. 1: Timer F is taken out of module standby mode.
1	FROMCKSTP	1	R/W	Flash Memory Module Standby The flash memory enters standby mode when this bit is cleared to 0. 0: The flash memory is placed in module standby mode. 1: The flash memory is taken out of module standby mode.
0	RTCKSTP	0	R/W	RTC Module Standby The RTC enters standby mode when this bit is cleared to 0. 0: The RTC is placed in module standby mode. 1: The RTC is taken out of module standby mode.

Note: \*1. In the mask-programmed ROM version, this is a reserved bit which is not readable or writable.

\*2. When SCI3 is put on module standby, all registers of SCI3 enter the reset state.

- Clock Halt Register 2 (CKSTPR2) Address: H'FFFB

Bit	Bit Name	Initial value	R/W	Description
7	ADBCKSTP	1	R/W	<p>Address Break Module Standby</p> <p>The address break module enters standby mode when this bit is cleared to 0.</p> <p>0: The address break module is placed in module standby mode.</p> <p>1: The address break module is taken out of module standby mode.</p>
6	TPUCKSTP	0	R/W	<p>TPU Module Standby</p> <p>The TPU enters standby mode when this bit is cleared to 0.</p> <p>0: The TPU is placed in module standby mode</p> <p>1: The TPU is taken out of module standby mode.</p>
5	IICCKSTP	0	R/W	<p>IIC2 Module Standby</p> <p>The IIC2 module enters standby mode when this bit is cleared to 0.</p> <p>0: The IIC2 module is placed in module standby mode.</p> <p>1: The IIC2 module is taken out of module standby mode.</p>
4	PW2CKSTP	0	R/W	<p>PWM2 Module Standby</p> <p>The PWM2 module enters standby mode when this bit is cleared to 0.</p> <p>0: The PWM2 module is placed in module standby mode.</p> <p>1: The PWM2 module is taken out of module standby mode.</p>
3	AECCKSTP	0	R/W	<p>Asynchronous Event Counter Module Standby</p> <p>The asynchronous event counter enters standby mode when this bit is cleared to 0.</p> <p>0: The asynchronous event counter is placed in module standby mode.</p> <p>1: The asynchronous event counter is taken out of module standby mode.</p>
2	WDCKSTP	0	R/W*	<p>Watchdog Timer Module Standby</p> <p>The watchdog timer enters standby mode when this bit is cleared to 0.</p> <p>0: The watchdog timer is placed in module standby mode</p> <p>1: The watchdog timer counter is taken out of module standby mode.</p>
1	PW1CKSTP	0	R/W	<p>PWM1 Module Standby</p> <p>The PWM1 module enters standby mode when this bit is cleared to 0.</p> <p>0: The PWM1 module is placed in module standby mode.</p> <p>1: The PWM1 module is taken out of module standby mode.</p>

Bit	Bit Name	Initial value	R/W	Description
0	LDCKSTP	0	R/W	LCD Module Standby The LCD controller/driver enters standby mode when this bit is cleared to 0. 0: The LCD controller/driver is placed in module standby mode. 1: The LCD controller/driver is taken out of module standby mode.

Note: \* This bit is valid when the WDON bit in TCSRWD1 is 0. If this bit is cleared to 0 while the WDON bit is set to 1 (i.e. while the watchdog timer is operating), the bit is cleared but the watchdog timer does not enter module standby mode; instead, it continues to operate. When the watchdog timer stops operating and the WDON bit is cleared to 0 by software, this bit is fully effective and the watchdog timer enters module standby mode.

## 5.2 Description of modules

Table 2 gives descriptions of the modules used in this sample task.

**Table 2 Description of Modules**

Module Name	Function
main ( )	<p>Main Routine</p> <p>Initial settings of the <math>\Delta\Sigma</math>A/D converter. Waits for the end of the first round of <math>\Delta\Sigma</math>A/D conversion, enables the <math>\Delta\Sigma</math>A/D conversion end interrupt request, starts the second and later rounds of <math>\Delta\Sigma</math>A/D conversion, and places the chip in the sleep (high-speed) mode. On completion of the 65th round of <math>\Delta\Sigma</math>A/D conversion, obtains the average of the results, and saves the averaged result in the internal RAM.</p>
int_dsadc ( )	<p><math>\Delta\Sigma</math>A/D converter interrupt processing routine</p> <p>Clears the <math>\Delta\Sigma</math>A/D converter interrupt request flag, obtains a running total of the results of A/D conversion in the second and later rounds, and increments the counter that controls the number of rounds of conversion by the <math>\Delta\Sigma</math>A/D converter.</p>

## 5.3 Description of RAM usage

Table 3 shows the RAM usage in this sample task.

**Table 3 Description of RAM usage**

Label Name	Function	Data Size	Address	Module Name
ad_result	Location for the average value of the results of measurement, i.e. the total over the 64 rounds of conversion shifted 6 bits right	unsigned short (2 bytes)	H'F780	main ( )
ad_work	Working area where the running total of results from the 64 rounds of $\Delta\Sigma$ A/D conversion is kept.	unsigned long (4 bytes)	H'F782	main ( ) int_dsadc ( )
ad_cnt	Counter that controls the number of rounds of conversion by the $\Delta\Sigma$ A/D converter	unsigned char (1 byte)	H'F786	main ( )

## 5.4 Link address settings

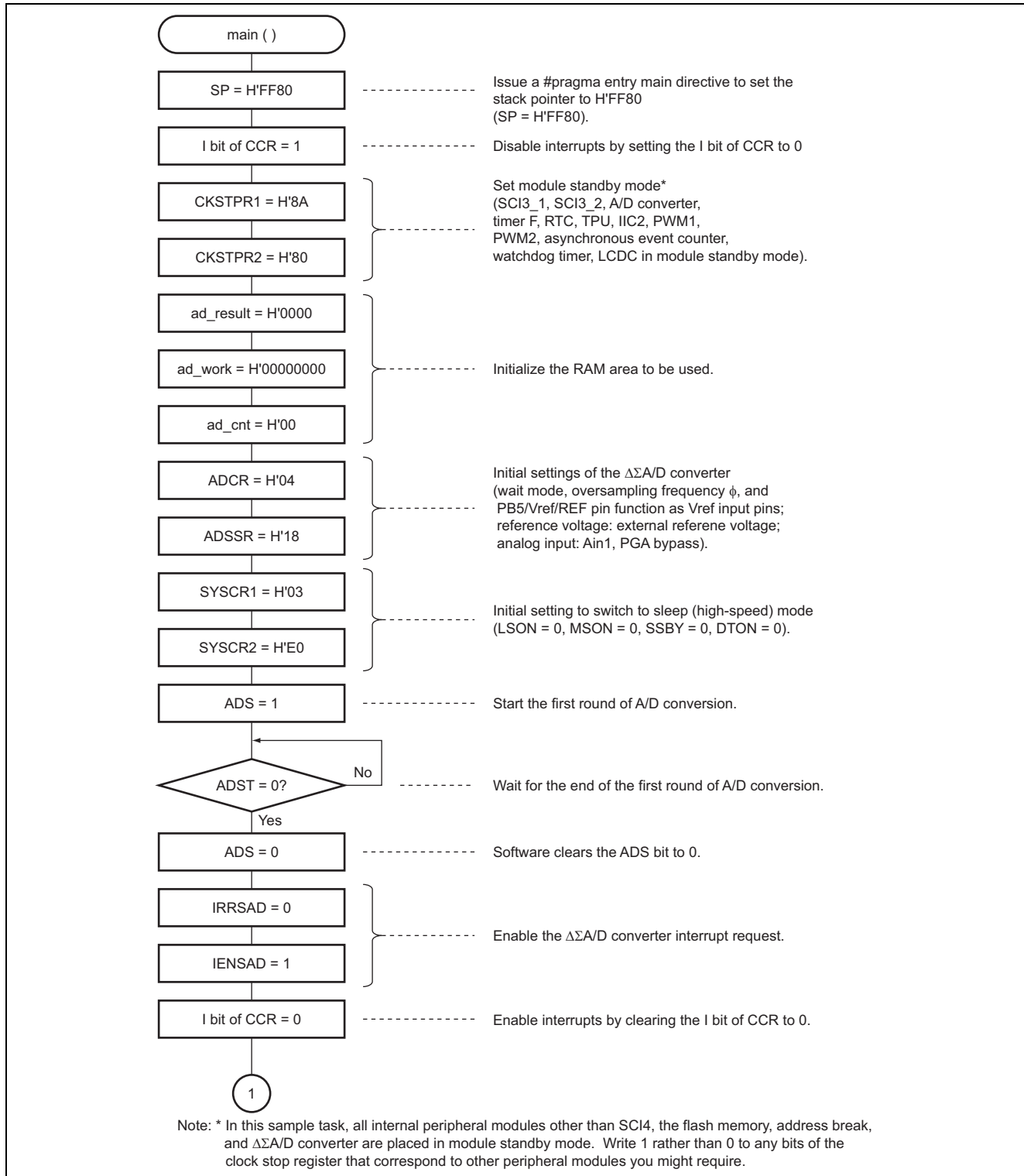
Table 4 shows the link addresses used in this sample task.

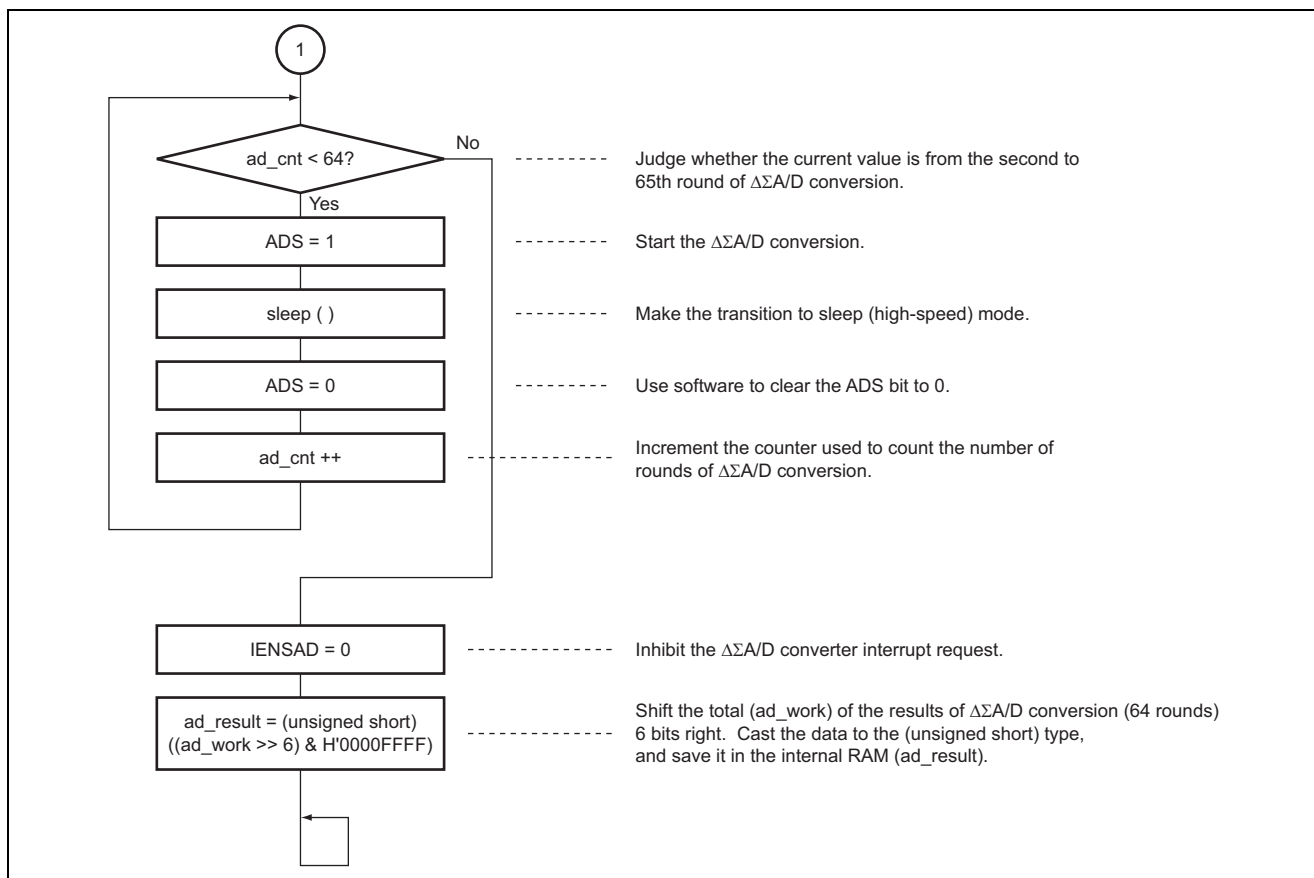
**Table 4 Link Address Settings**

Section Name	Address
CVECT	H'0000
P	H'0100
B	H'F780

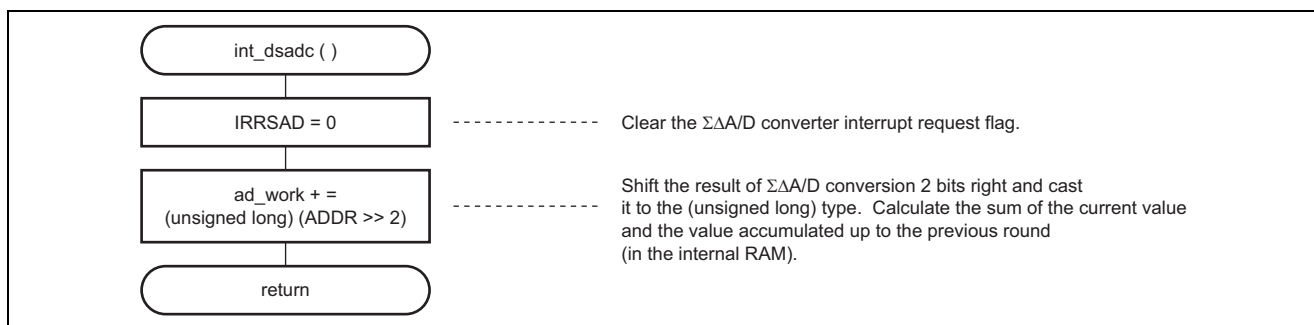
### 6. Flowcharts

#### 6.1 Main routine





### 6.2 $\Delta\Sigma$ A/D converter interrupt processing routine



## Website and Support

Renesas Technology Website  
<http://www.renesas.com/>

Inquiries  
<http://www.renesas.com/inquiry>  
[csc@renesas.com](mailto:csc@renesas.com)

## Revision Record

Rev.	Date	Description	
		Page	Summary
1.00	Sep.05.06	—	First edition issued

**Keep safety first in your circuit designs!**

1. Renesas Technology Corp. puts the maximum effort into making semiconductor products better and more reliable, but there is always the possibility that trouble may occur with them. Trouble with semiconductors may lead to personal injury, fire or property damage.  
Remember to give due consideration to safety when making your circuit designs, with appropriate measures such as (i) placement of substitutive, auxiliary circuits, (ii) use of nonflammable material or (iii) prevention against any malfunction or mishap.

**Notes regarding these materials**

1. These materials are intended as a reference to assist our customers in the selection of the Renesas Technology Corp. product best suited to the customer's application; they do not convey any license under any intellectual property rights, or any other rights, belonging to Renesas Technology Corp. or a third party.
2. Renesas Technology Corp. assumes no responsibility for any damage, or infringement of any third-party's rights, originating in the use of any product data, diagrams, charts, programs, algorithms, or circuit application examples contained in these materials.
3. All information contained in these materials, including product data, diagrams, charts, programs and algorithms represents information on products at the time of publication of these materials, and are subject to change by Renesas Technology Corp. without notice due to product improvements or other reasons. It is therefore recommended that customers contact Renesas Technology Corp. or an authorized Renesas Technology Corp. product distributor for the latest product information before purchasing a product listed herein.  
The information described here may contain technical inaccuracies or typographical errors. Renesas Technology Corp. assumes no responsibility for any damage, liability, or other loss rising from these inaccuracies or errors.  
Please also pay attention to information published by Renesas Technology Corp. by various means, including the Renesas Technology Corp. Semiconductor home page (<http://www.renesas.com>).
4. When using any or all of the information contained in these materials, including product data, diagrams, charts, programs, and algorithms, please be sure to evaluate all information as a total system before making a final decision on the applicability of the information and products. Renesas Technology Corp. assumes no responsibility for any damage, liability or other loss resulting from the information contained herein.
5. Renesas Technology Corp. semiconductors are not designed or manufactured for use in a device or system that is used under circumstances in which human life is potentially at stake. Please contact Renesas Technology Corp. or an authorized Renesas Technology Corp. product distributor when considering the use of a product contained herein for any specific purposes, such as apparatus or systems for transportation, vehicular, medical, aerospace, nuclear, or undersea repeater use.
6. The prior written approval of Renesas Technology Corp. is necessary to reprint or reproduce in whole or in part these materials.
7. If these products or technologies are subject to the Japanese export control restrictions, they must be exported under a license from the Japanese government and cannot be imported into a country other than the approved destination.  
Any diversion or reexport contrary to the export control laws and regulations of Japan and/or the country of destination is prohibited.
8. Please contact Renesas Technology Corp. for further details on these materials or the products contained therein.