

SH7216 Group

R01AN0316EJ0110

Rev.1.10

Using USB to Reprogram Flash Memory in User Program Mode

Mar 17, 2011

Introduction

In the sample application, the user program mode of the SH7216 is used to reprogram the on-chip flash memory. The data used to program the on-chip flash is stored in a host PC connected to the SH7216, and the USB function module is used for data transfer.

The program used to reprogram the on-chip flash in the sample application is located in the user MAT of the SH7216. The simple flash API (standard API) for the SH-2 and SH-2A, supplied by Renesas Electronics, is used to reprogram the on-chip flash.

Target Device

SH7216

Contents

1. Introduction.....	2
2. Overview and Functions.....	4
3. Operation of Sample Program	10

1. Introduction

In the sample application, the SH7216 receives data from the host PC and reprograms the on-chip flash in user program mode.

1.1 Specifications

Figure 1 shows a system overview of the sample application.

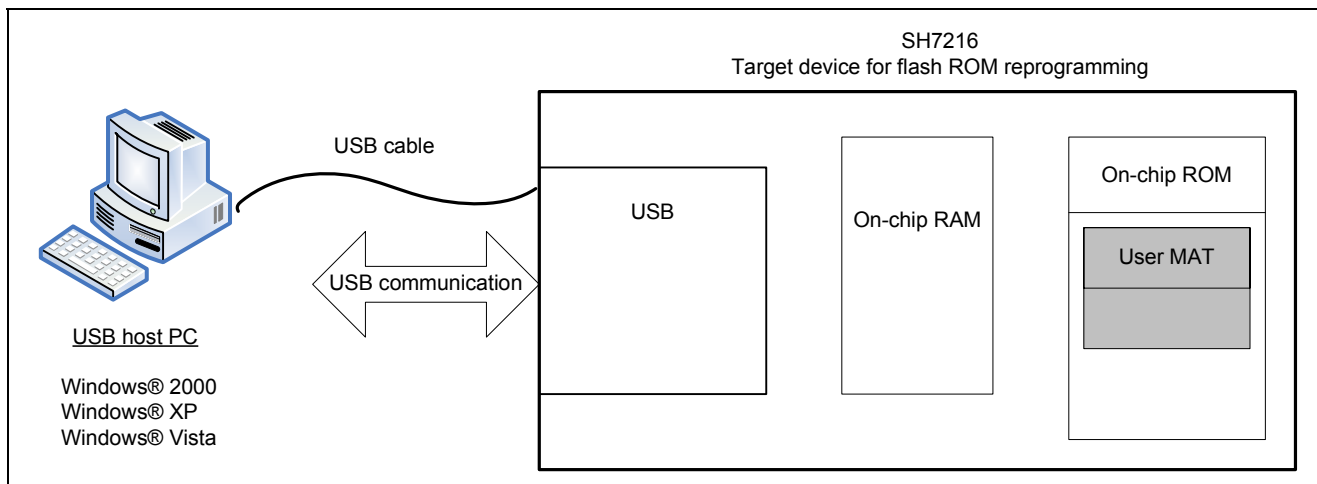


Figure 1.1 System Configuration

- The SH7216 operating mode is user program mode.
- The data to be written to the SH7216 is stored in the host PC.
- The SH7216 and host PC are connected by the USB cable, via which the write data is transferred.
- The SH7216 executes a program in on-chip RAM during reprogramming of the on-chip flash.
- The SH7216 has two data buffer areas (256 bytes each), which are used in parallel for writing to the on-chip flash and for downloading data.
- The standard API is used to program and erase the on-chip flash.

Table 1 SH7216 Mode Pin Settings

Mode	Pin Settings		
	FWE	MD1	MD0
User program mode	1	1	0

1.2 Functions Used

- Interrupt controller (INTC)
- Pin function controller (PFC)
- USB function module (USB)
- Dedicated sequencer for on-chip flash (FCU)

1.3 Applicable Conditions

MCU	SH7216
Operating frequency	Internal clock: 200 MHz
	Bus clock: 50 MHz
	Peripheral clock: 50 MHz
	MTU2S clock: 100 MHz
	AD clock: 50 MHz
Integrated development environment	Renesas Electronics High-performance Embedded Workshop, Ver. 4.07.00
C compiler	Renesas Electronics SuperH RISC engine Family C/C++ Compiler Package, Ver. 9.03.00, Release 02
Compile options	High-performance Embedded Workshop default settings (-cpu=sh2afpu- include="\$(WORKSPDIR)\C_Source", "\$(WORKSPDIR)\C_Source\flash" -object="\$(CONFIGDIR)\\$(FILELEAF).obj" -debug -gbr=auto -chgincpath -errorpath -global_volatile=0 -opt_range=all -infinite_loop=0 -del_vacant_loop=0 -struct_alloc=1 -nologo

1.4 Related Application Notes

The following application note is related to this application note. Refer to it as necessary in conjunction with this application note.

- SH Family: Simple Flash API for SH-2 and SH-2A
- SH7216 Group USB Function Module: USB Serial Conversion Application Note
- SH7216 Group USB Function Module: USB Mass Storage Class Application Note (REJ06B0897)
- SH7216 Group USB Function Module: USB HID Class Application Note (REJ06B0898)

2. Overview and Functions

In the sample application, the SH7216 and host PC are connected by the USB. In addition, a dedicated sequencer (FCU) is used on the SH7216 to program and erase the on-chip flash.

2.1 Description of Functions Used

2.1.1 USB function module (USB) Functions

The sample application transfers data for reprogramming the on-chip flash between the SH7216 and the PC.

Figure 2 is a block diagram of the USB function module.

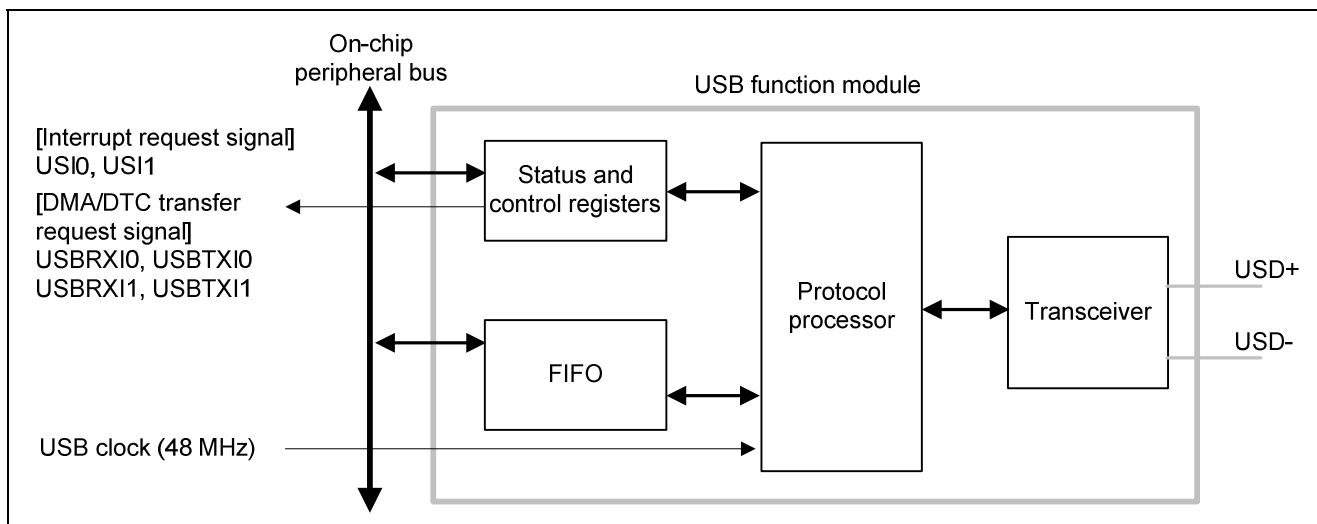


Figure 2 Block Diagram of USB

The features of the on-chip USB function module of the SH7216 are as follows.

- Automatic processing of USB protocol
- Automatic processing of USB standard commands for endpoint 0 (Some commands need to be processed through the firmware.)
- Transfer speed: Full speed
- Interrupt requests: Generation of interrupt signals needed for USB transmission and reception
- Clock: External input clock generated by USB oscillator (48 MHz)
- Low-power mode
- Integrated bus transceiver
- Endpoint configurations: Shown in table 2.

SH7216 Group Using USB to Reprogram Flash Memory in User Program Mode

Table 2 Endpoint Configurations

Endpoint	Name	Transfer Type	Max. Packet Size	FIFO Buffer Capacity	DMA Transfer
Endpoint 0	EP0s	Setup	8 bytes	8 bytes	—
	EP0i	Control-in	16 bytes	16 bytes	—
	EP0o	Control-out	16 bytes	16 bytes	—
Endpoint 1	EP1	Bulk-in	64 bytes	64 × 2 (128) bytes	Possible
Endpoint 2	EP2	Bulk-out	64 bytes	64 × 2 (128) bytes	Possible
Endpoint 3	EP3	Interrupt-in	16 bytes	16 bytes	—
Endpoint 4	EP4	Bulk-in	64 bytes	64 × 2 (128) bytes	Possible
Endpoint 5	EP5	Bulk-out	64 bytes	64 × 2 (128) bytes	Possible
Endpoint 6	EP6	Interrupt-in	16 bytes	16 bytes	—
Endpoint 7	EP7	Bulk-in	64 bytes	64 bytes	—
Endpoint 8	EP8	Bulk-out	64 bytes	64 bytes	—
Endpoint 9	EP9	Interrupt-in	16 bytes	16 bytes	—

2.1.2 On-Chip Flash Dedicated Sequencer (FCU) Functions

The SH7216 uses the FCU to reprogram the on-chip flash.

Figure 3 is a block diagram of the on-chip flash.

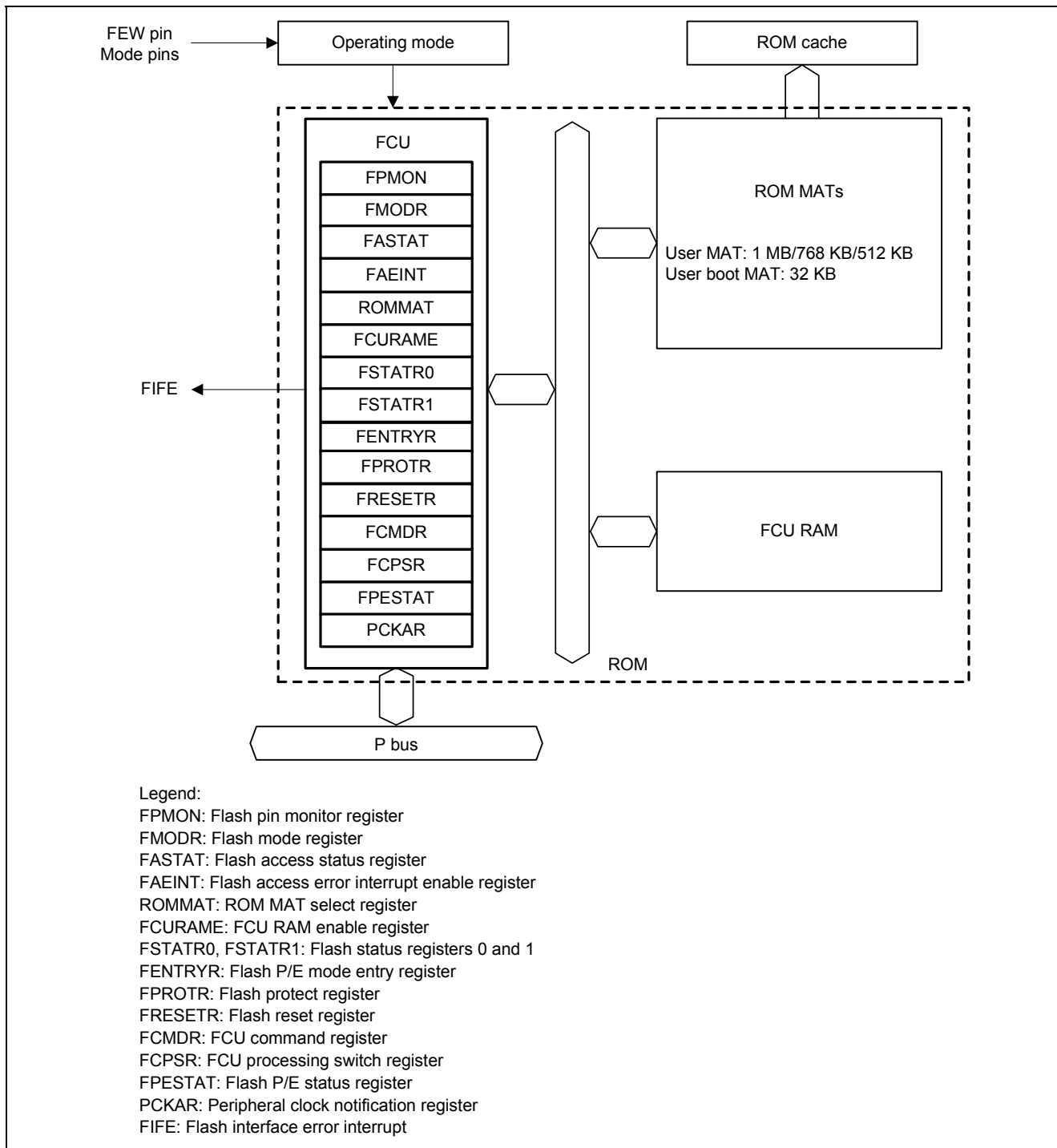


Figure 3 Block Diagram of On-Chip Flash

2.2 On-Chip Flash Programming/Erasing Operation

The SH7216 uses the FCU to program and erase the on-chip flash. In the sample application, a standard API is used to program and erase the on-chip flash. The operations described below are carried out within the standard API. For details of the standard API, see the related application note.

2.2.1 Preparation for On-Chip Flash Programming/Erasing

In order to use the FCU, the FCU firmware must be stored in the FCU RAM. After the FCU firmware has been transferred, the FCU can be used to program or erase the on-chip flash by issuing FCU commands to it.

The FCU firmware is stored in the FCU firmware area of the device, and it must be transferred to the FCU RAM at startup. In addition, FCU RAM access is disabled at device startup, so access must be enabled by making the appropriate register setting.

2.2.2 On-Chip Flash Erasing

On the SH7216, the on-chip flash is divided into multiple blocks, and erasing is performed in block units. After the FCU firmware has been transferred, the FCU performs a block erase when an erase command*¹ and an execute command are written to the address of the erasure target block.

Figure 4 shows the division of the SH7216 erasure blocks, and table 2 lists the addresses of the individual blocks.

Note: 1. The erase command may be written to any valid program/erase address in the on-chip flash.

Program/erase address	On-chip flash (user MAT)	Erasure block
H'8080_0000	8 KB × 8	EB00
⋮		⋮
H'8080_FFFF		EB07
H'8081_0000		EB08
⋮	64 KB × 9	⋮
H'8089_FFFF		EB16
H'808A_0000		EB17
⋮		⋮
H'808F_FFFF	128 KB × 3	EB19

Figure 4 Division of On-Chip Flash Erasure Blocks

Table 3 Erasure Blocks and Addresses

Erasure Block	Actual Address	Program/Erase Address	Unit Capacity
EB00	H'0000_0000 to H'0000_1FFF	H'8080_0000 to H'8080_1FFF	8 KB
EB01	H'0000_2000 to H'0000_3FFF	H'8080_2000 to H'8080_3FFF	
EB02	H'0000_4000 to H'0000_5FFF	H'8080_4000 to H'8080_5FFF	
EB03	H'0000_6000 to H'0000_7FFF	H'8080_6000 to H'8080_7FFF	
EB04	H'0000_8000 to H'0000_9FFF	H'8080_8000 to H'8080_9FFF	
EB05	H'0000_A000 to H'0000_BFFF	H'8080_A000 to H'8080_BFFF	
EB06	H'0000_C000 to H'0000_DFFF	H'8080_C000 to H'8080_DFFF	
EB07	H'0000_E000 to H'0000_FFFF	H'8080_E000 to H'8080_FFFF	
EB08	H'0001_0000 to H'0001_FFFF	H'8081_0000 to H'8081_FFFF	64 KB
EB09	H'0002_0000 to H'0002_FFFF	H'8082_0000 to H'8082_FFFF	
EB10	H'0003_0000 to H'0003_FFFF	H'8083_0000 to H'8083_FFFF	
EB11	H'0004_0000 to H'0004_FFFF	H'8084_0000 to H'8084_FFFF	
EB12	H'0005_0000 to H'0005_FFFF	H'8085_0000 to H'8085_FFFF	
EB13	H'0006_0000 to H'0006_FFFF	H'8086_0000 to H'8086_FFFF	
EB14	H'0007_0000 to H'0007_FFFF	H'8087_0000 to H'8087_FFFF	
EB15	H'0008_0000 to H'0008_FFFF	H'8088_0000 to H'8088_FFFF	
EB16	H'0009_0000 to H'0009_FFFF	H'8089_0000 to H'8089_FFFF	128 KB
EB17	H'000A_0000 to H'000B_FFFF	H'808A_0000 to H'808B_FFFF	
EB18	H'000C_0000 to H'000D_FFFF	H'808C_0000 to H'808D_FFFF	
EB19	H'000E_0000 to H'000F_FFFF	H'808E_0000 to H'808F_FFFF	

2.2.3 On-Chip Flash Programming

Programming of the on-chip flash can only take place when the target area is in the erased state. A single write to the user MAT comprises a 256-byte unit of data. As with erasing, the programming procedure consists of issuing a command to the FCU, after which the FCU performs the operation. A write command and the write size*¹ are issued to the program/erase address, followed by writing*² the write data (256 bytes) to the write destination address.*³

- Notes:
1. The write size is fixed at 256 bytes when writing to the user MAT and user boot MAT (issue H'80 as the size).
 2. The write data is written to the program/erase address in word size.
 3. This address (the program/erase address) is the write address plus H'8080_0000.

2.3 Data Buffer for Reprogramming On-Chip Flash

In the sample application, a buffer area in the SH7216 is used to save the write data to be programmed to the on-chip RAM. The capacity of the buffer area is 256 bytes, which corresponds to the size of one on-chip flash write operation. A double-buffer configuration is used to enable data transfers from the external device and writing to the on-chip flash to take place in parallel.

The operation of the buffers is determined by using the `buff0_full` and `buff1_full` flags.*¹ When the value of `buff0_full` is `BUF_ON`, the data in buffer 0 (Buff0) is written to the on-chip flash while simultaneously the next unit of write data is downloaded to buffer 1 (Buff1). When the value of `buff1_full` is `BUF_ON`, the operations are reversed.

Figure 5 shows an outline of buffer operation.

Note: 1. In the sample application these flags are set to user-defined values. For details, see table 5, Control Flags.

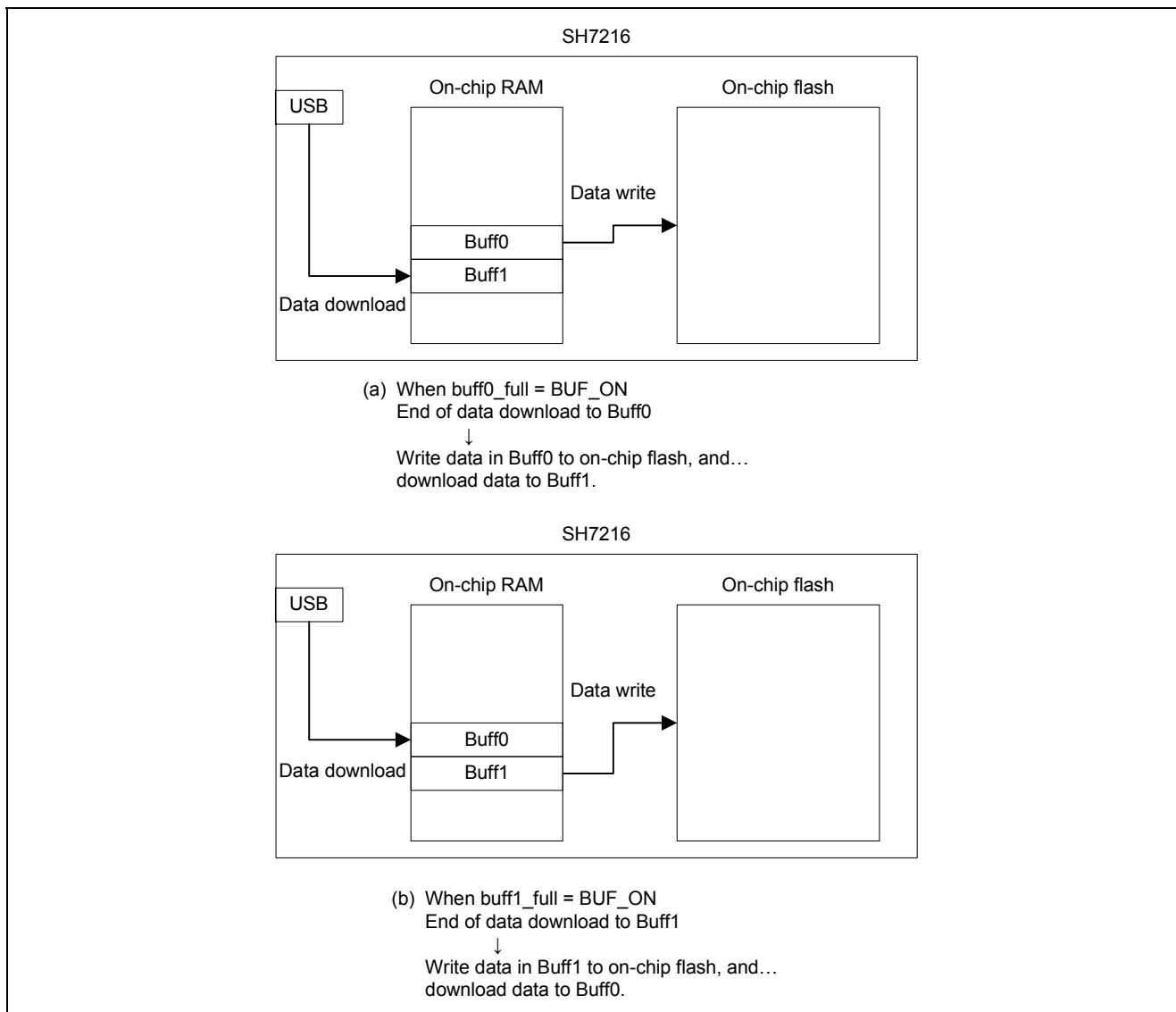


Figure 5 Outline of Buffer Operation

3. Operation of Sample Program

3.1 Outline of Operation Overall

The sample application erases and programs the user MAT area except for blocks EB00 to EB04 (EB05 to EB19).

Figure 6 shows the overall operation sequence.

The above-mentioned area in the on-chip flash programming target device (SH7216) is erased, the USB cable connection is checked, and then the SH7216 waits to receive the write byte count. After it receives the write byte count, the SH7216 enters the state in which it receives data from the host PC.

After all the data has been written, the SH7216 issues the end command and processing ends.

Note: Specify the write byte count as a character string of decimal numbers no more than nine characters in length, including newline characters (CR, LF).

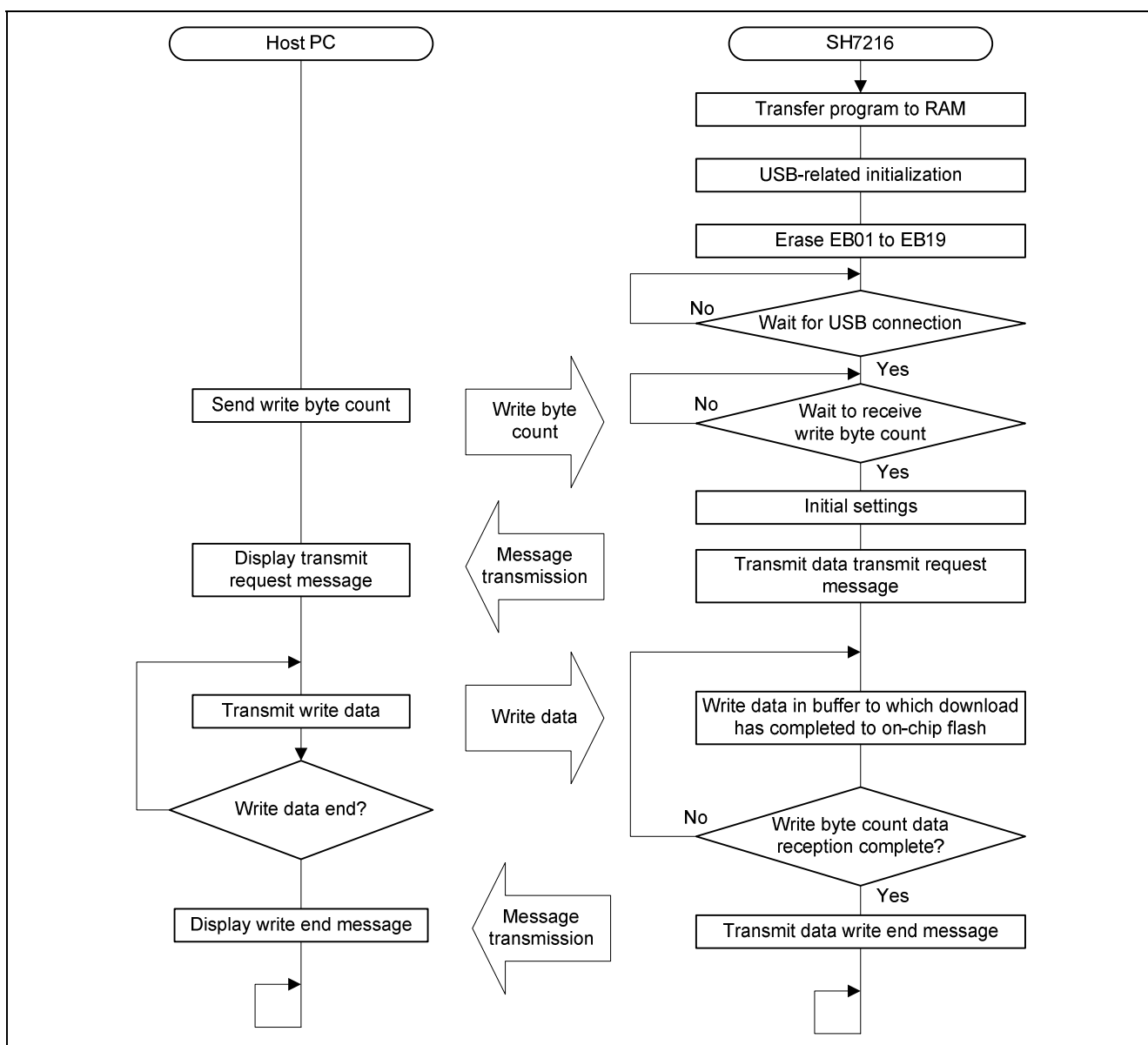


Figure 6 Overall Operation Sequence

3.2 Using the Sample Program

Make the following connections, then power on the SH7216 CPU board.

- Connect the E10A to the SH7216 CPU board.
- Connect the USB cable to the SH7216 CPU board.

(1) Connect the USB cable to the host PC. If a message requesting a device driver appears, run the new hardware detection wizard to enable the PC to recognize the device. In this case, specify the file RN_CommClass.inf (Windows XP) as the device driver.

Device driver storage location: C:\WorkSpace\sh7216_flash_usb\USB_CommClass_INF

Notes: 1. For Windows Vista, select the file RN_CommClassVista.inf.

2. Once the device has been recognized, it is not necessary to perform the device recognition procedure again.

(2) Launch a general-purpose communication program on the host PC and select the COM port to be used.

(3) Set the attributes of the serial port to the values listed in table 4.

Table 4 Serial Port Attributes

Setting Item	Value
Port No.	COM port number on which host PC recognized SH7216 CPU board
Baud rate	115,200 bps
Data	8 bits
Parity	None
Stop	1 bit
Flow control	None

(4) In the terminal program on the host PC, set the transmission attribute to “binary” and transmit the write byte count as a character string of decimal numbers no more than nine characters in length, including newline characters (CR, LF). When the transmission completes, the following message is displayed.

Please Send FW Data

(5) In the terminal program on the host PC, set the transmission attribute to “binary” and transmit the data to be written to the ROM. At this point, it is possible to transmit the data by specifying a file in the file selection menu. When programming of the ROM completes successfully, the following message is displayed in the communication terminal window.

The flash writing was completed.

3.3 Basic Specifications of Sample Program

3.3.1 Functions Used by Sample Program

Table 5 lists the control flags used in the sample application.

Table 5 Control Flags

Variable	Function	Type Declaration
buff_no	Indicates buffer number (0/1) used for download.	
on_write0	Indicates the on-chip flash write state of buffer 0. 0 (BUFF_OFF): No data write in progress 1 (BUFF_ON): Data write in progress	
on_write1	Indicates the on-chip flash write state of buffer 1. 0 (BUFF_OFF): No data write in progress 1 (BUFF_ON): Data write in progress	
buff0_full	Indicates the download state of buffer 0. 0 (BUFF_OFF): Buffer empty 1 (BUFF_ON): Buffer data full	
buff1_full	Indicates the download state of buffer 1. 0 (BUFF_OFF): Buffer empty 1 (BUFF_ON): Buffer data full	
remain_recv_byte	Indicates the remaining write byte count.	
write_counter	Data write count	

The sample application uses fixed values for the user MAT area (EB05 to EB19), write start address (0x0000A000), and size (0xF6000).

Note: To change the write start address, edit the appropriate values in the definition data of the source program, as shown in figure 7 (max. write size: FW_DATA_MAX_SIZE, write start ROM address: WRITE_ROM_ADDR, write start block number: FLASH_BLK_START).

```
(SH7216_USB_FLASH.c)
```

```
...
/* ==== Macro definition ==== */
#define FW_DATA_BUF_SIZE 256
#define FW_DATA_MAX_SIZE 0xF6000 /* Write Max size */
#define WRITE_ROM_ADDR 0x0000A000 /* EB05 Address */
#define FLASH_BLK_START 5 /* Start block No. */
#define FLASH_BLK_END 20 /* Block Num. */
```

Figure 7 Write Definition Data

3.3.2 Control Functions of Sample Program

Table 6 lists the functions used in the sample application.

Table 6 List of Functions Used

Function Name	Function	Remarks
main	Erases on-chip flash and makes initial settings. Processes writing to on-chip flash (writing of buffer data using control flags).	Figures 8 to 10
ActBusReset	Bus reset interrupt handler	Figure 11
ActControlInOut	Processes control-in and control-out operations.	Figure 12
ActControl	Processes control transfers.	Figure 13
ActBulkOut	Processes bulk-out data receive operations.	Figure 14
BranchOfInt0	USBIFR0 interrupt handler	Figure 15
BranchOfInt1	USBIFR1 interrupt handler	Figure 16
R_FlashErase	Erases specified block.	Standard API
R_FlashWrite	Writes data to specified address.	

3.3.3 Section Settings of Sample Program

Table 7 lists the section settings used in the sample application.

Table 7 Sample Program Section Settings

Section Name	Address	Description	Remarks
DVECTTBL	H'0000_0000	Vector table	On-chip flash
DINTTBL			
PResetPRG		Reset handler	
PIntPRG		Exception handler	
P	H'0000_0A00	Program area	
PFRAM		Standard API	
C		Constant area	
C\$BSEC			
C\$DSEC			
D		Initialization data area	
RDVECTTBL	H'FFF8_0000	Vector table (allocated in RAM)	RAM
RDINTTBL			
RResetPRG		Reset handler (allocated in RAM)	
RIntPRG		Exception handler (allocated in RAM)	
RP	H'FFF8_0A00	Program area (allocated in RAM)	
RPFAM		Standard API (allocated in RAM)	
RC		Constant area (allocated in RAM)	
RC\$BSEC			
RC\$DSEC			
R		Initialization data area (allocated in RAM)	
B	H'FFF8_8F00	Uninitialized data area	
S	H'FFF8_FC00	Stack area	

3.3.4 Register Settings of Sample Program

Table 8 lists the register settings used in the sample application.

Table 8 Register Settings

Module	Register Name	Address	Setting Value	Description
Pin function controller (PFC)	Port B I/O register L (PBIORL)	H' FFFE3886	H'8000	PB15IOR = B'1: USB pull-up control
USB function module (USB)	USB interrupt flag register 0 (USBIFR0)	H' FFFE7000	H'80	BRST = B'1: Bus reset signal detected
			H'40	CFDN = B'1: Endpoint information loading complete
			H'08	SETC = B'1: Set_Configuration command detected
			H'04	SETI = B'1: Set_Interface command detected
			H'02	VBUSMN: VBUS pin status monitor 0: VBUS pin = 0 1: VBUS pin = 1
			H'01	VBUSF: USB bus connection/disconnection detection 0: No change 1: Connection/disconnection detected
	USB interrupt flag register 1 (USBIFR1)	H' FFFE7001	H'10	SOF = B'1: SOF packet detected
			H'08	SETUPTS = B'1: Setup command receive complete
			H'04	EP0oTS = B'1: EP0o receive complete
			H'02	EP0iTR = B'1: EP0i transfer request
			H'01	EP0iTS = B'1: EP0i transmit complete
	USB interrupt flag register 2 (USBIFR2)	H' FFFE7002	H'20	EP3TR = B'1: EP3 transfer request
			H'10	EP3TS = B'1: EP3 transmit complete
			H'08	EP2TR = B'1: EP2 transfer request
H'04			EP2EMPTY = B'1: EP2 FIFO empty	
H'02			EP2ALLEMP = B'1: EP2 FIFO all empty	
H'01			EP1FULL = B'1: EP1 FIFO full	

3.4 Flowcharts

Figures 8 to 16 show the operation sequences of the functions used in the sample application.

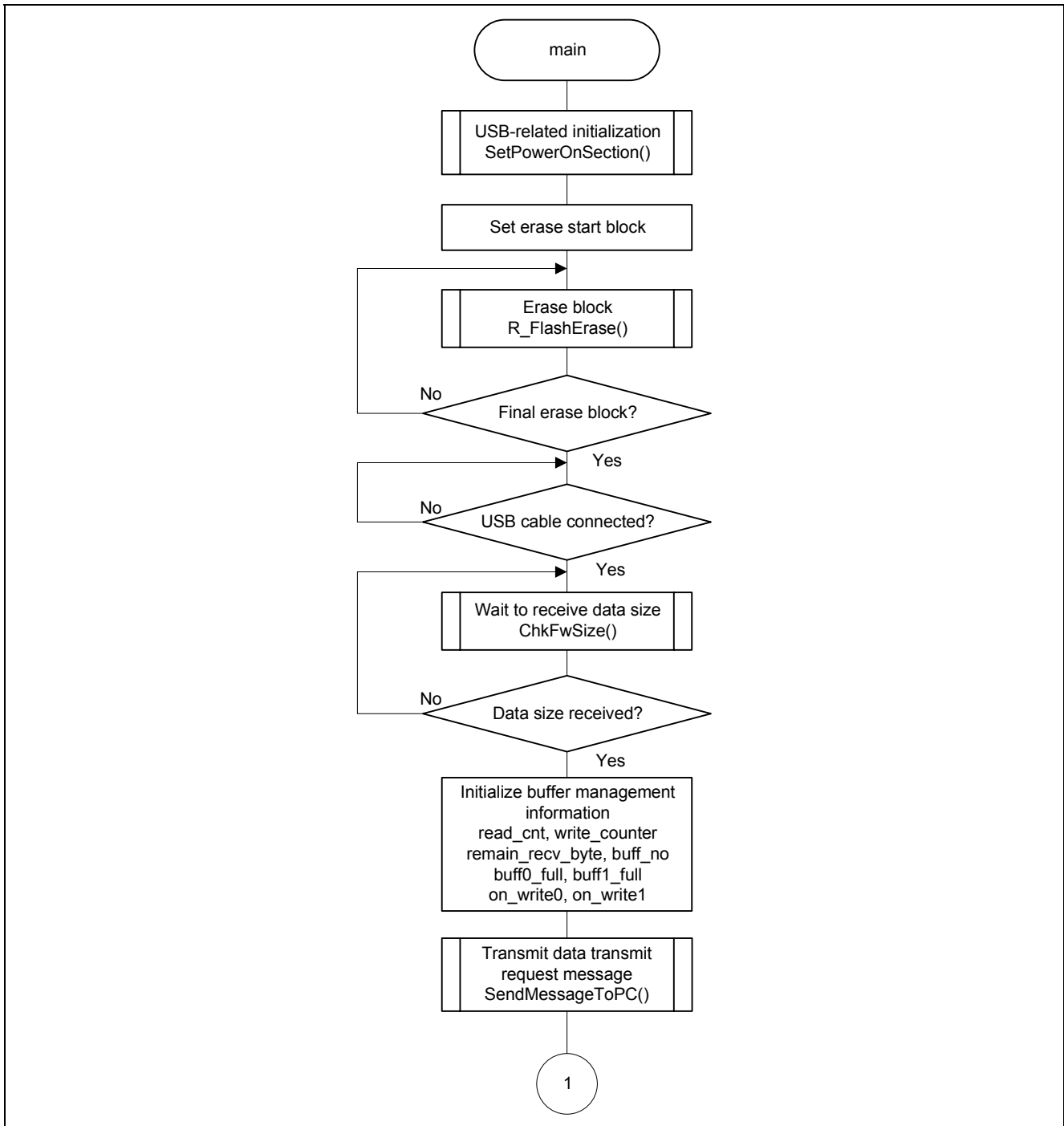


Figure 8 Main Process Sequence (1/3)

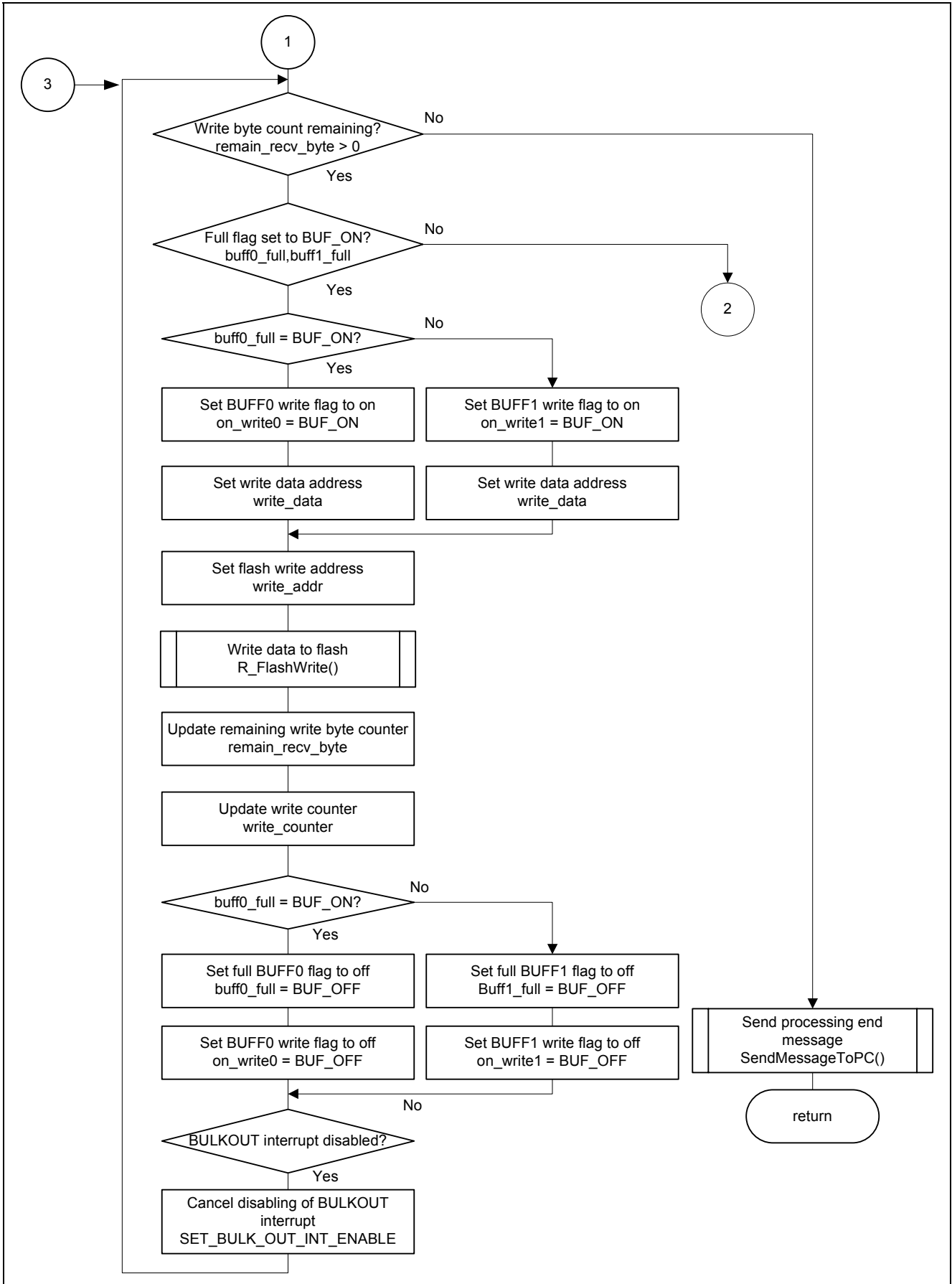


Figure 9 Main Process Sequence (2/3)

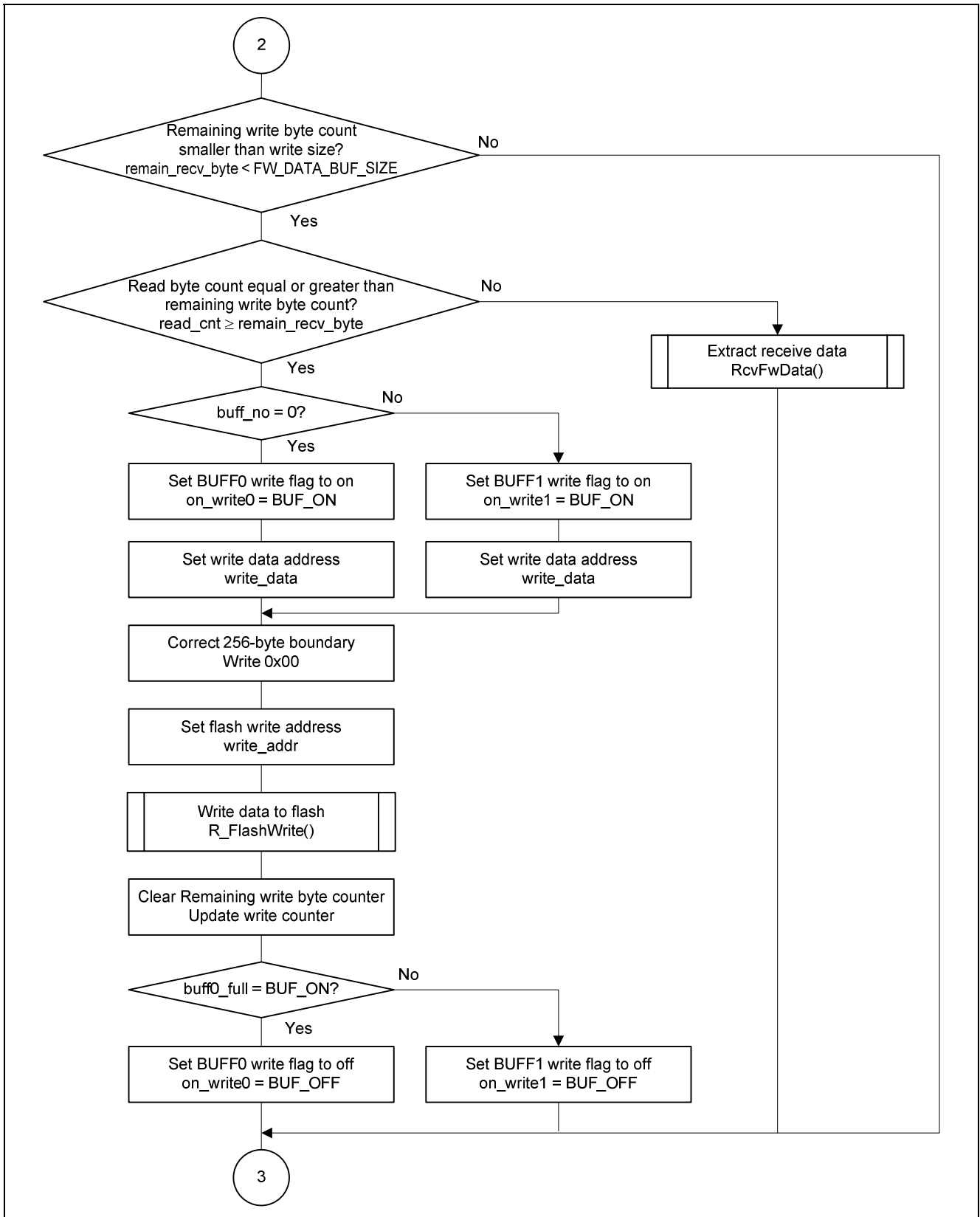


Figure 10 Main Process Sequence (3/3)

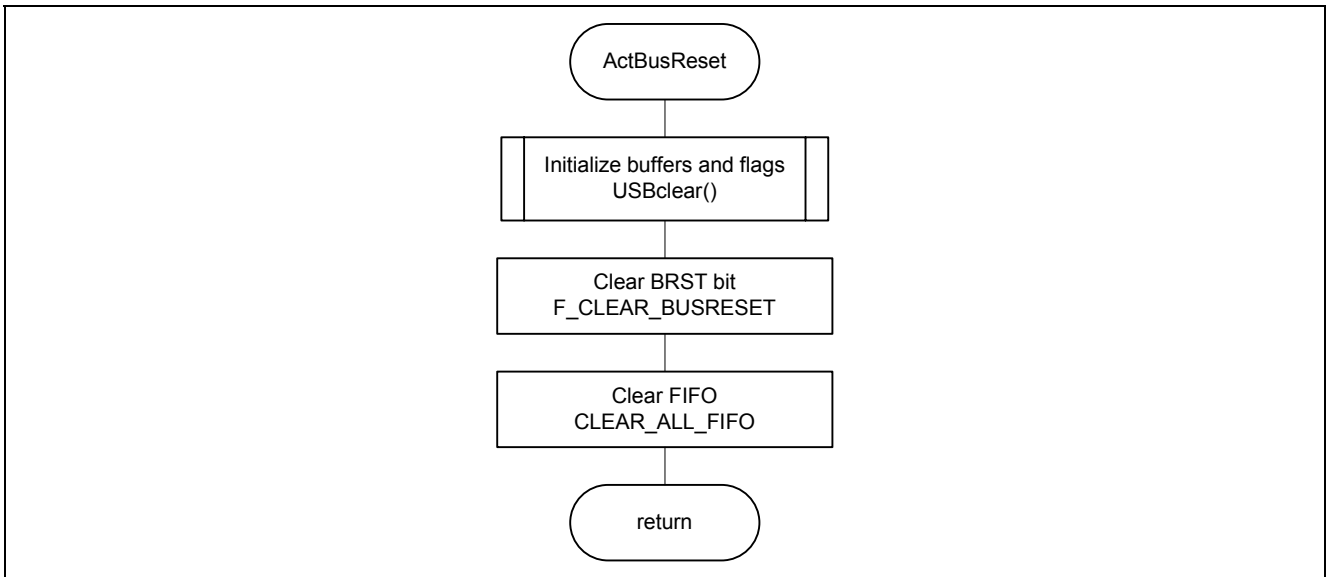


Figure 11 Flowchart of USB Bus Reset Interrupt Handler

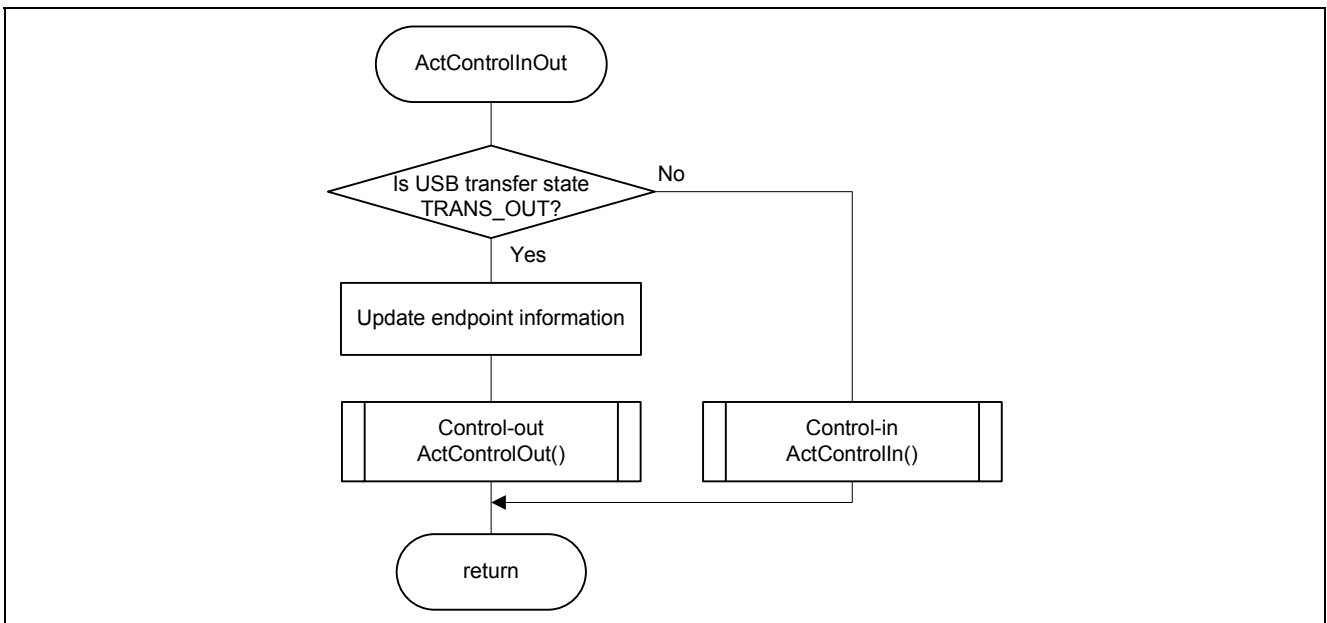


Figure 12 Flowchart of USB Control-In/Control-Out Processing

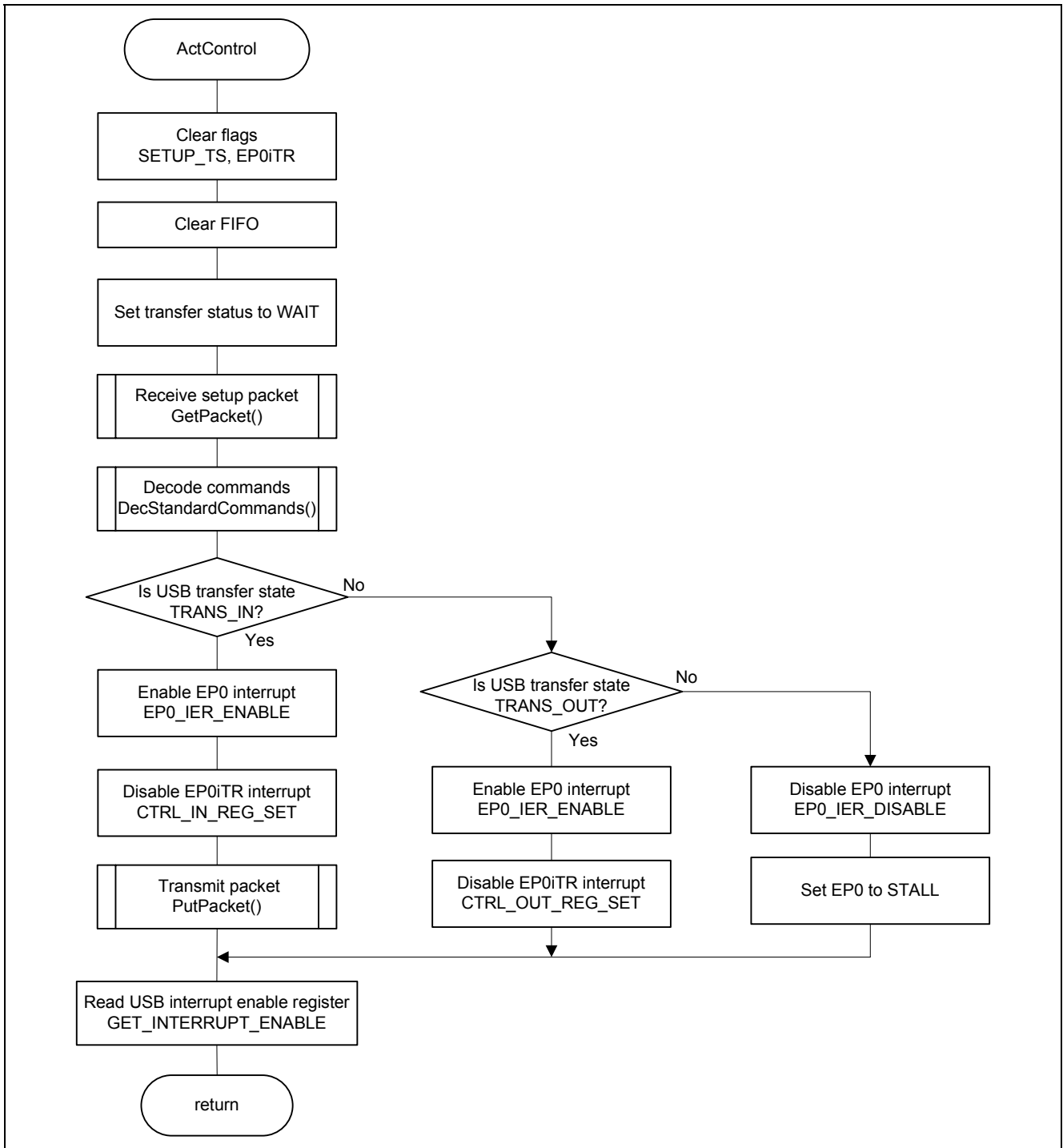


Figure 13 Flowchart of USB Control Transfer Processing

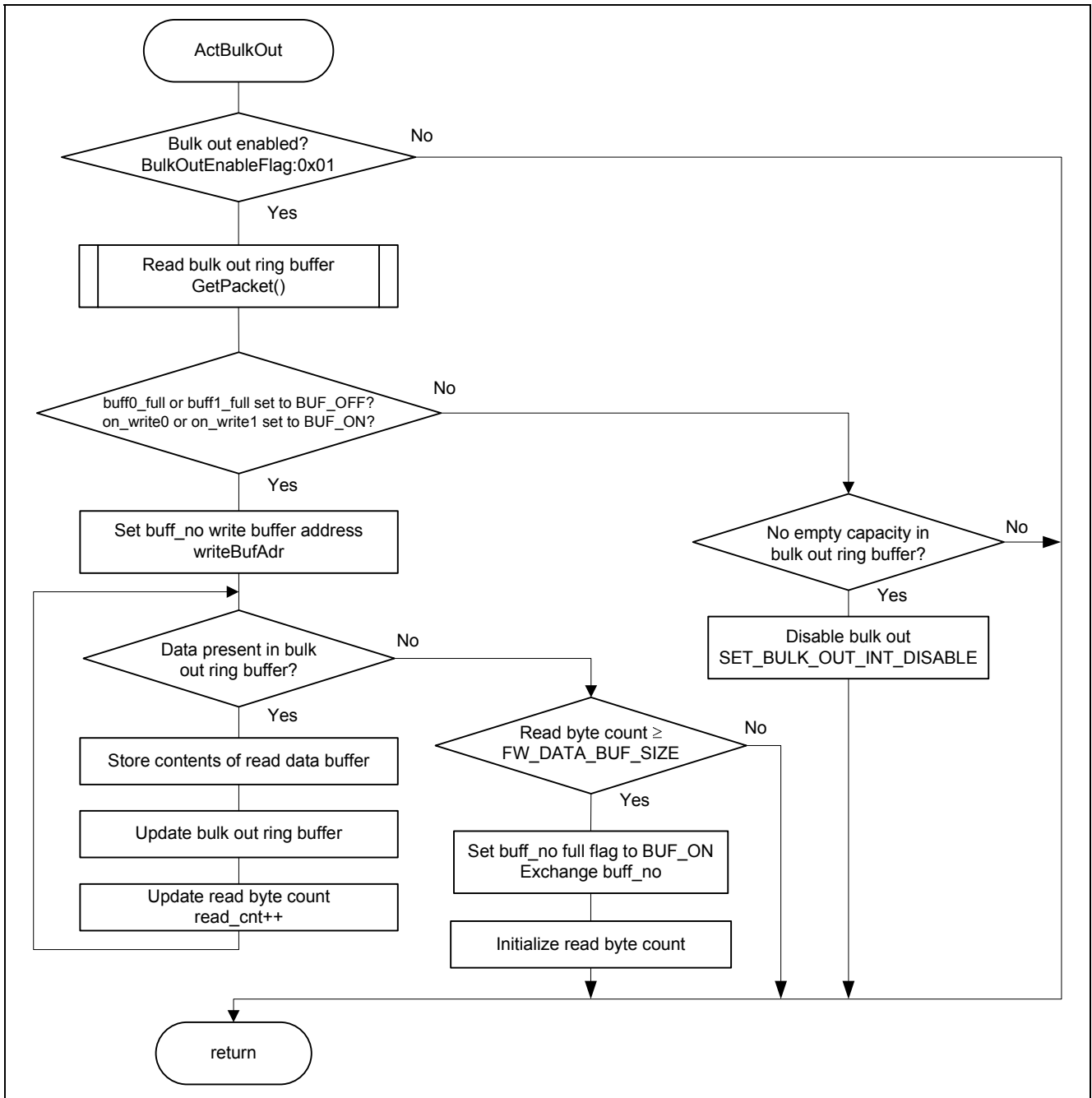


Figure 14 Flowchart of USB Bulk Out Data Receive Processing

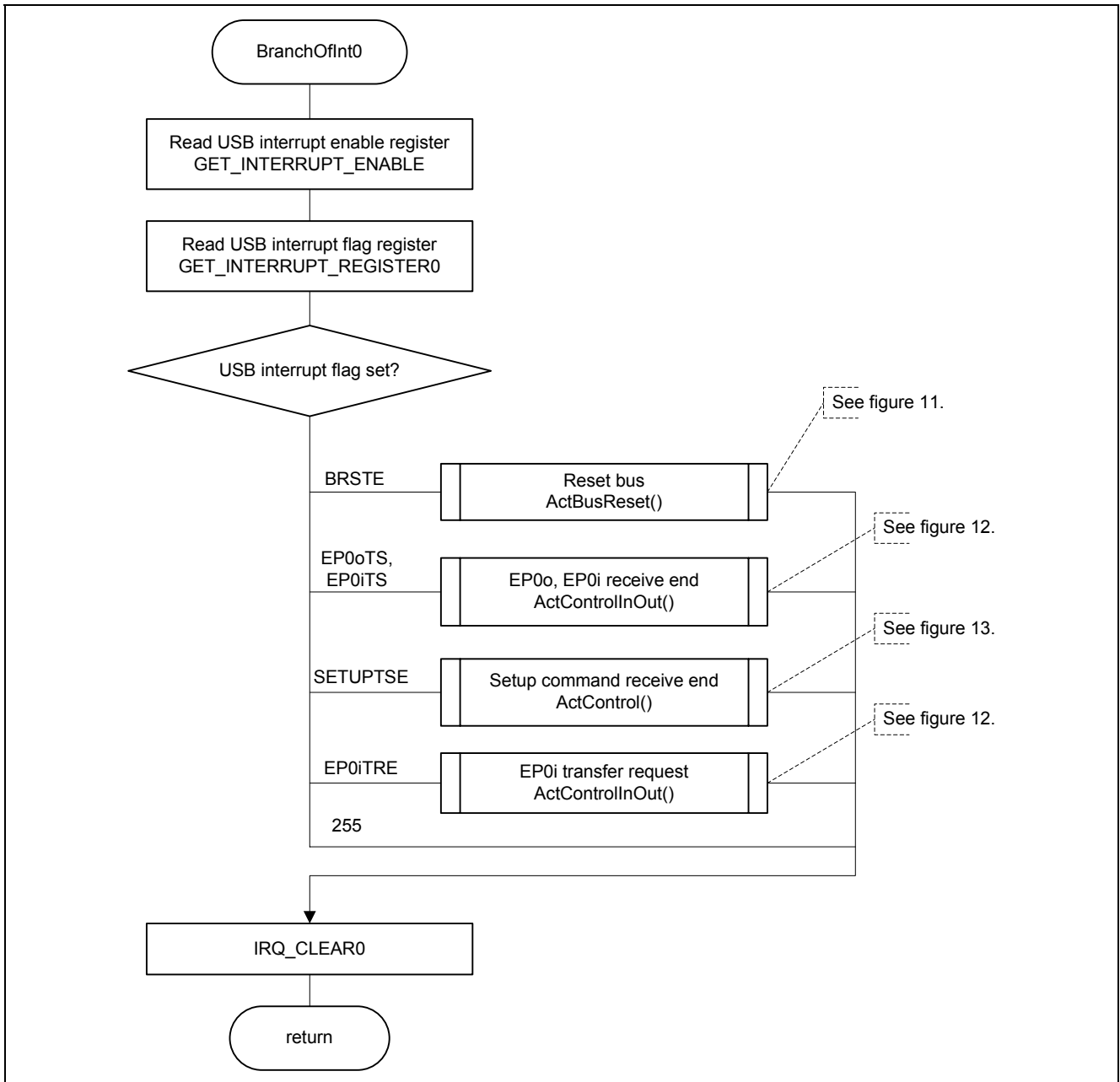


Figure 15 Flowchart of USBIFR0 Interrupt Handler

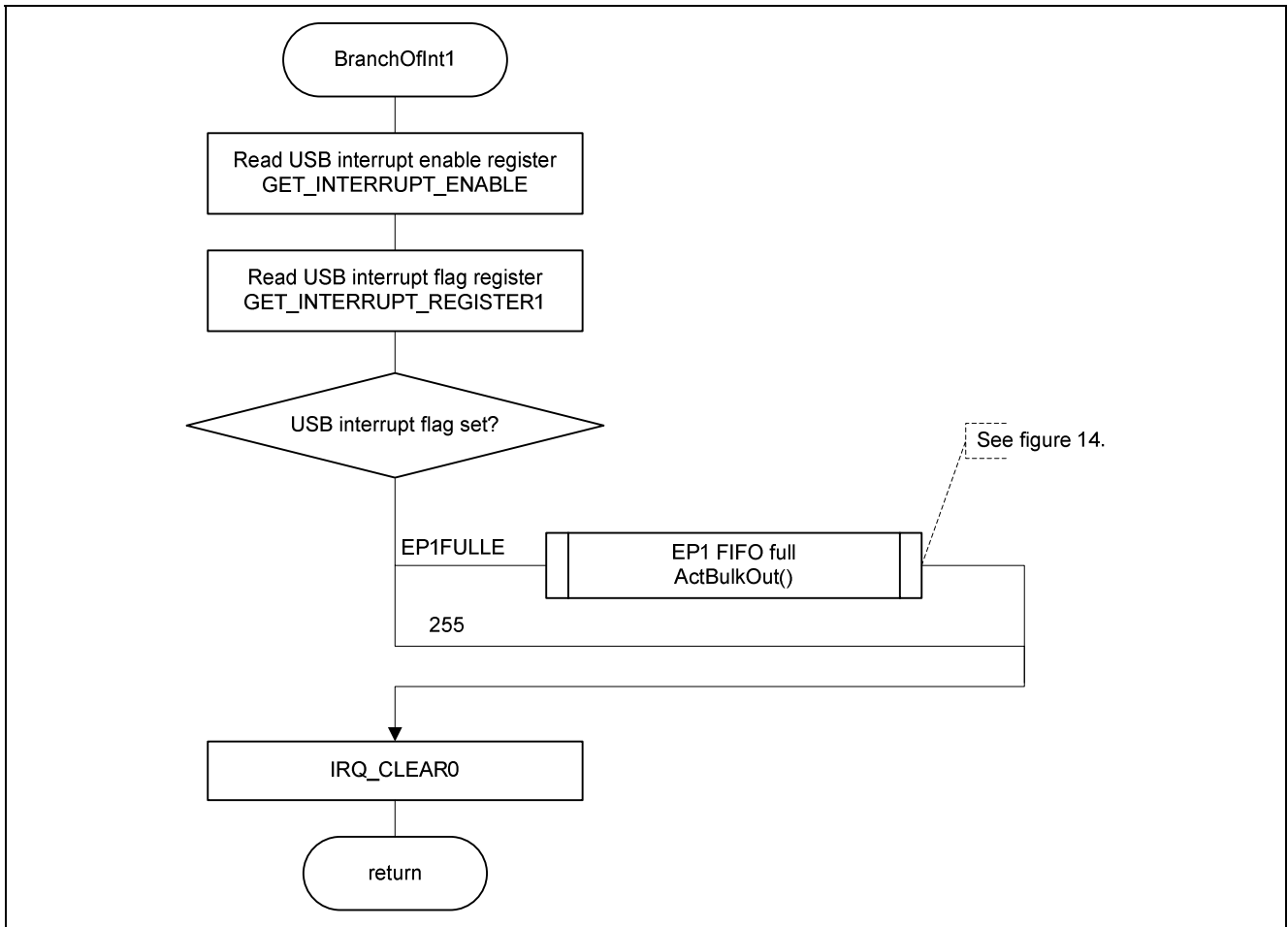


Figure 16 Flowchart of USBIFR1 Interrupt Handler

Website and Support

Renesas Electronics Website

<http://www.renesas.com/>

Inquiries

<http://www.renesas.com/inquiry>

All trademarks and registered trademarks are the property of their respective owners.

Revision Record

Rev.	Date	Description	
		Page	Summary
1.00	Dec.14.10	—	First edition issued
1.10	Mar.17.11	—	Added read after FRQCR settings

General Precautions in the Handling of MPU/MCU Products

The following usage notes are applicable to all MPU/MCU products from Renesas. For detailed usage notes on the products covered by this manual, refer to the relevant sections of the manual. If the descriptions under General Precautions in the Handling of MPU/MCU Products and in the body of the manual differ from each other, the description in the body of the manual takes precedence.

1. Handling of Unused Pins

Handle unused pins in accord with the directions given under Handling of Unused Pins in the manual.

- The input pins of CMOS products are generally in the high-impedance state. In operation with an unused pin in the open-circuit state, extra electromagnetic noise is induced in the vicinity of LSI, an associated shoot-through current flows internally, and malfunctions occur due to the false recognition of the pin state as an input signal become possible. Unused pins should be handled as described under Handling of Unused Pins in the manual.

2. Processing at Power-on

The state of the product is undefined at the moment when power is supplied.

- The states of internal circuits in the LSI are indeterminate and the states of register settings and pins are undefined at the moment when power is supplied.

In a finished product where the reset signal is applied to the external reset pin, the states of pins are not guaranteed from the moment when power is supplied until the reset process is completed.

In a similar way, the states of pins in a product that is reset by an on-chip power-on reset function are not guaranteed from the moment when power is supplied until the power reaches the level at which resetting has been specified.

3. Prohibition of Access to Reserved Addresses

Access to reserved addresses is prohibited.

- The reserved addresses are provided for the possible future expansion of functions. Do not access these addresses; the correct operation of LSI is not guaranteed if they are accessed.

4. Clock Signals

After applying a reset, only release the reset line after the operating clock signal has become stable.

When switching the clock signal during program execution, wait until the target clock signal has stabilized.

- When the clock signal is generated with an external resonator (or from an external oscillator) during a reset, ensure that the reset line is only released after full stabilization of the clock signal. Moreover, when switching to a clock signal produced with an external resonator (or by an external oscillator) while program execution is in progress, wait until the target clock signal is stable.

5. Differences between Products

Before changing from one product to another, i.e. to one with a different type number, confirm that the change will not lead to problems.

- The characteristics of MPU/MCU in the same group but having different type numbers may differ because of the differences in internal memory capacity and layout pattern. When changing to products of different type numbers, implement a system-evaluation test for each of the products.

Notice

1. All information included in this document is current as of the date this document is issued. Such information, however, is subject to change without any prior notice. Before purchasing or using any Renesas Electronics products listed herein, please confirm the latest product information with a Renesas Electronics sales office. Also, please pay regular and careful attention to additional and different information to be disclosed by Renesas Electronics such as that disclosed through our website.
2. Renesas Electronics does not assume any liability for infringement of patents, copyrights, or other intellectual property rights of third parties by or arising from the use of Renesas Electronics products or technical information described in this document. No license, express, implied or otherwise, is granted hereby under any patents, copyrights or other intellectual property rights of Renesas Electronics or others.
3. You should not alter, modify, copy, or otherwise misappropriate any Renesas Electronics product, whether in whole or in part.
4. Descriptions of circuits, software and other related information in this document are provided only to illustrate the operation of semiconductor products and application examples. You are fully responsible for the incorporation of these circuits, software, and information in the design of your equipment. Renesas Electronics assumes no responsibility for any losses incurred by you or third parties arising from the use of these circuits, software, or information.
5. When exporting the products or technology described in this document, you should comply with the applicable export control laws and regulations and follow the procedures required by such laws and regulations. You should not use Renesas Electronics products or the technology described in this document for any purpose relating to military applications or use by the military, including but not limited to the development of weapons of mass destruction. Renesas Electronics products and technology may not be used for or incorporated into any products or systems whose manufacture, use, or sale is prohibited under any applicable domestic or foreign laws or regulations.
6. Renesas Electronics has used reasonable care in preparing the information included in this document, but Renesas Electronics does not warrant that such information is error free. Renesas Electronics assumes no liability whatsoever for any damages incurred by you resulting from errors in or omissions from the information included herein.
7. Renesas Electronics products are classified according to the following three quality grades: "Standard", "High Quality", and "Specific". The recommended applications for each Renesas Electronics product depends on the product's quality grade, as indicated below. You must check the quality grade of each Renesas Electronics product before using it in a particular application. You may not use any Renesas Electronics product for any application categorized as "Specific" without the prior written consent of Renesas Electronics. Further, you may not use any Renesas Electronics product for any application for which it is not intended without the prior written consent of Renesas Electronics. Renesas Electronics shall not be in any way liable for any damages or losses incurred by you or third parties arising from the use of any Renesas Electronics product for an application categorized as "Specific" or for which the product is not intended where you have failed to obtain the prior written consent of Renesas Electronics. The quality grade of each Renesas Electronics product is "Standard" unless otherwise expressly specified in a Renesas Electronics data sheets or data books, etc.
"Standard": Computers; office equipment; communications equipment; test and measurement equipment; audio and visual equipment; home electronic appliances; machine tools; personal electronic equipment; and industrial robots.
"High Quality": Transportation equipment (automobiles, trains, ships, etc.); traffic control systems; anti-disaster systems; anti-crime systems; safety equipment; and medical equipment not specifically designed for life support.
"Specific": Aircraft; aerospace equipment; submersible repeaters; nuclear reactor control systems; medical equipment or systems for life support (e.g. artificial life support devices or systems), surgical implantations, or healthcare intervention (e.g. excision, etc.), and any other applications or purposes that pose a direct threat to human life.
8. You should use the Renesas Electronics products described in this document within the range specified by Renesas Electronics, especially with respect to the maximum rating, operating supply voltage range, movement power voltage range, heat radiation characteristics, installation and other product characteristics. Renesas Electronics shall have no liability for malfunctions or damages arising out of the use of Renesas Electronics products beyond such specified ranges.
9. Although Renesas Electronics endeavors to improve the quality and reliability of its products, semiconductor products have specific characteristics such as the occurrence of failure at a certain rate and malfunctions under certain use conditions. Further, Renesas Electronics products are not subject to radiation resistance design. Please be sure to implement safety measures to guard them against the possibility of physical injury, and injury or damage caused by fire in the event of the failure of a Renesas Electronics product, such as safety design for hardware and software including but not limited to redundancy, fire control and malfunction prevention, appropriate treatment for aging degradation or any other appropriate measures. Because the evaluation of microcomputer software alone is very difficult, please evaluate the safety of the final products or system manufactured by you.
10. Please contact a Renesas Electronics sales office for details as to environmental matters such as the environmental compatibility of each Renesas Electronics product. Please use Renesas Electronics products in compliance with all applicable laws and regulations that regulate the inclusion or use of controlled substances, including without limitation, the EU RoHS Directive. Renesas Electronics assumes no liability for damages or losses occurring as a result of your noncompliance with applicable laws and regulations.
11. This document may not be reproduced or duplicated, in any form, in whole or in part, without prior written consent of Renesas Electronics.
12. Please contact a Renesas Electronics sales office if you have any questions regarding the information contained in this document or Renesas Electronics products, or if you have any other inquiries.

(Note 1) "Renesas Electronics" as used in this document means Renesas Electronics Corporation and also includes its majority-owned subsidiaries.

(Note 2) "Renesas Electronics product(s)" means any product developed or manufactured by or for Renesas Electronics.



SALES OFFICES

Renesas Electronics Corporation

<http://www.renesas.com>

Refer to "<http://www.renesas.com/>" for the latest and detailed information.

Renesas Electronics America Inc.

2880 Scott Boulevard Santa Clara, CA 95050-2554, U.S.A.
Tel: +1-408-588-6000, Fax: +1-408-588-6130

Renesas Electronics Canada Limited

1101 Nicholson Road, Newmarket, Ontario L3Y 9C3, Canada
Tel: +1-905-898-5441, Fax: +1-905-898-3220

Renesas Electronics Europe Limited

Dukes Meadow, Millboard Road, Bourne End, Buckinghamshire, SL8 5FH, U.K
Tel: +44-1628-585-100, Fax: +44-1628-585-900

Renesas Electronics Europe GmbH

Arcadiastrasse 10, 40472 Düsseldorf, Germany
Tel: +49-211-65030, Fax: +49-211-6503-1327

Renesas Electronics (China) Co., Ltd.

7th Floor, Quantum Plaza, No.27 ZhiChunLu Haidian District, Beijing 100083, P.R.China
Tel: +86-10-8235-1155, Fax: +86-10-8235-7679

Renesas Electronics (Shanghai) Co., Ltd.

Unit 204, 205, AZIA Center, No.1233 Lujiazui Ring Rd., Pudong District, Shanghai 200120, China
Tel: +86-21-5877-1818, Fax: +86-21-6887-7858 / -7898

Renesas Electronics Hong Kong Limited

Unit 1601-1613, 16/F., Tower 2, Grand Century Place, 193 Prince Edward Road West, Mongkok, Kowloon, Hong Kong
Tel: +852-2886-9318, Fax: +852 2886-9022/9044

Renesas Electronics Taiwan Co., Ltd.

7F, No. 363 Fu Shing North Road Taipei, Taiwan
Tel: +886-2-8175-9600, Fax: +886 2-8175-9670

Renesas Electronics Singapore Pte. Ltd.

1 HarbourFront Avenue, #06-10, Keppel Bay Tower, Singapore 098632
Tel: +65-6213-0200, Fax: +65-6278-8001

Renesas Electronics Malaysia Sdn.Bhd.

Unit 906, Block B, Menara Amcorp, Amcorp Trade Centre, No. 18, Jln Persiaran Barat, 46050 Petaling Jaya, Selangor Darul Ehsan, Malaysia
Tel: +60-3-7955-9390, Fax: +60-3-7955-9510

Renesas Electronics Korea Co., Ltd.

11F., Samik Laviel' or Bldg., 720-2 Yeoksam-Dong, Kangnam-Ku, Seoul 135-080, Korea
Tel: +82-2-558-3737, Fax: +82-2-558-5141